

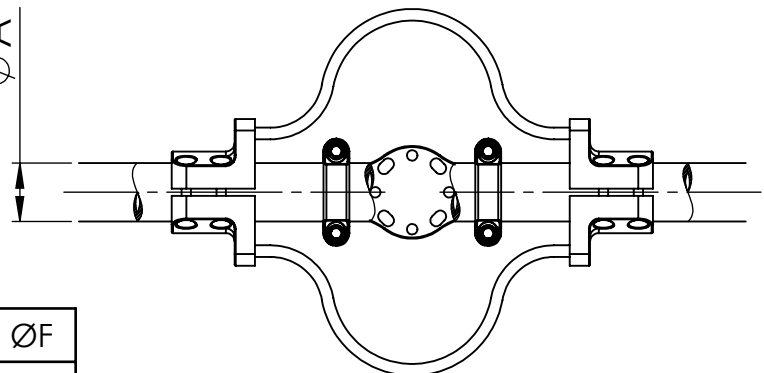
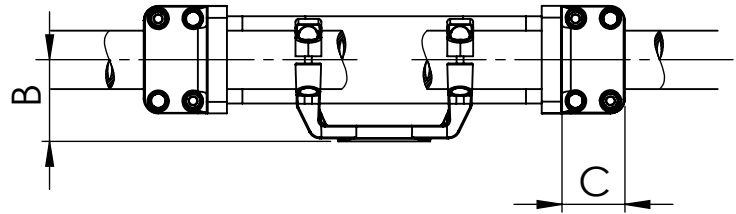
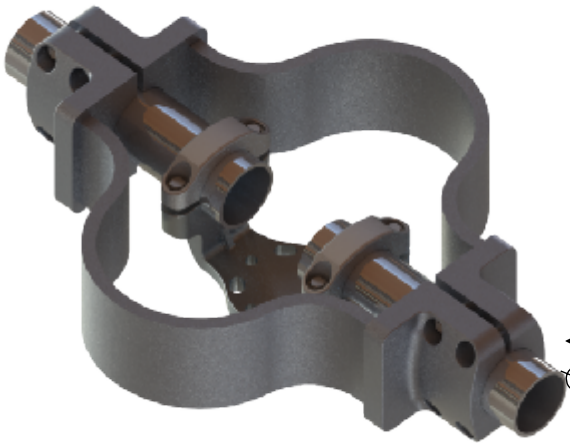


REFERENCE
LAMPEFBI

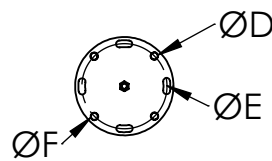
Expansion straight connector union tubes on insulator.

Material: Casting - Aluminum Alloy

Hardware: Stainless or Galvanized Steel



ØD	ØE	ØF
4.25	3	9/16
6.22	5	11/16
8.07	7	13/16



CATALOG NUMBER	DIMENSIONS			Tightening torque (ft.lb)
	A	B	C	
LAMPEFBI-73	2 1/2	4.13	3.94	40
LAMPEFBI-89	3	4.13	4.33	40
LAMPEFBI-101	3 1/2	4.13	4.33	40
LAMPEFBI-114	4	5.51	4.33	55
LAMPEFBI-141	5	6.69	4.33	55

*ADD:

-76 for 3" insulator, -127 for 5" insulator, -178 for 7" insulator.

Example: LAMPEFBI-114127 for 4" tube and 5" Insulator.