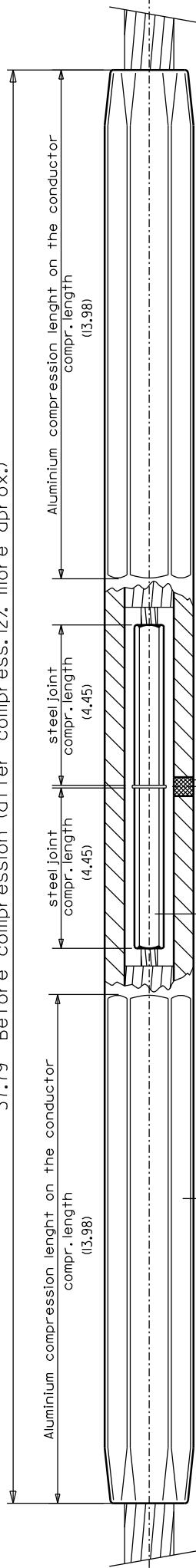
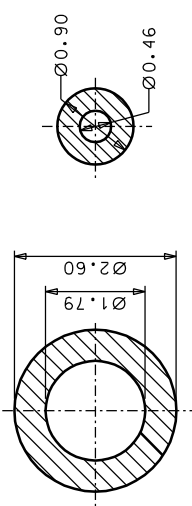


37.79 Before compression (after compress. 12% more approx.)



DIMENSIONS BEFORE COMPR.



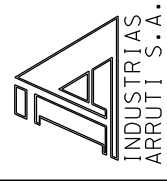
AL. TUBE  
STEEL TERMINAL

HEX. DIE TO USE:  
ALUMINIUM: 42AH  
STEEL: 14SH

- MARKS
- **A** & LOT
  - REFERENCE OF THE CLAMP
  - CONDUCTOR NAME
  - MIN. RECOMMENDED PRESS
  - DIE SIZE
  - COMPRESSION AREA

- Notes:
- Hot dip galvanized according to ASTM A153
  - Tolerances unless otherwise stated to be up to and including 1.4" ±0.027 Over 1.4" ±2%
  - All dimensions in inches

3	1	FILLER PLUG	ALUMINIUM
2	1	STEEL JOINT BODY	STEEL GALVANIZED
1	1	ALUMINIUM JOINT BODY	ALUMINIUM
N/QTY		DENOMINATION	MATERIAL



**FULL TENSION COMPRESSION JOINT EC-977/AM FOR ACSR CHUKAR CONDUCTOR**

UNIT (inch)	Approx. Weight: 13.0 lb U.S.: 95% of conductor R.B.S.	
	SCALE	DWG No
	06-07-21	EC977AM
	06-07-21	ISSUE
		0

MOD.	DATE	MODIFICATION	DRAWN BY
		CODE	