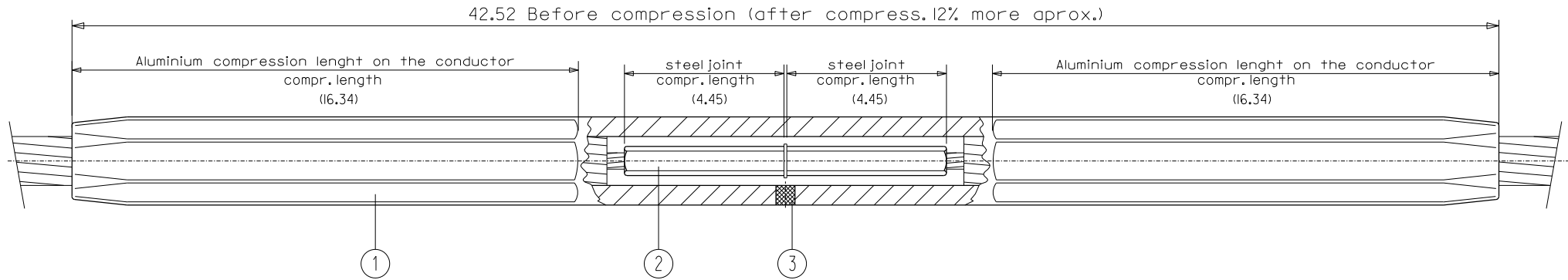
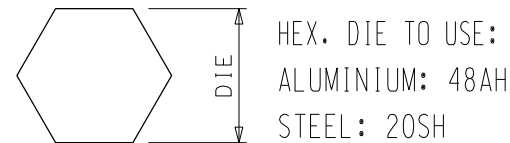
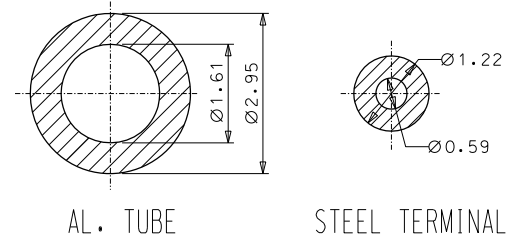


This drawing is property of I. Arruti and must not be copied, exhibited or furnished without the written consent of I. Arruti



DIMENSIONS BEFORE COMPR.



MARKS	
-	& LOT
-	REFERENCE OF THE CLAMP
-	CONDUCTOR NAME
-	MIN. RECOMMENDED PRESS
-	DIE SIZE
-	COMPRESSION AREA

Notes:

- Hot dip galvanized according to ASTM A153
- Tolerances unless otherwise stated to be up to and including 1.4" ±0.027 Over 1.4" ±2%
- All dimensions in inches

3	1	FILLER PLUG	ALUMINIUM
2	1	STEEL JOINT BODY	STEEL GALVANIZED
1	1	ALUMINIUM JOINT BODY	ALUMINIUM
N	QTY	DENOMINATION	MATERIAL

MOD.		DATE		MODIFICATION				DRAWN BY	
 INDUSTRIAS ARRUTI S.A.		CODE							
		FULL TENSION COMPRESSION JOINT EC-1100-SS/TW/AM FOR ACSS/TW CUMBERLAND CONDUCTOR							
		UNIT (inch)		Aprox. Weight: 14.75 lb U.S.: 95% of conductor R.B.S.					
DRAWN	J.E.	4-10-20	SCALE	DWG No	ISSUE				
CHECKED	I.L.	4-10-20	D/S	EC1100SSTWAM	0				

ARCHIVO:usacompression