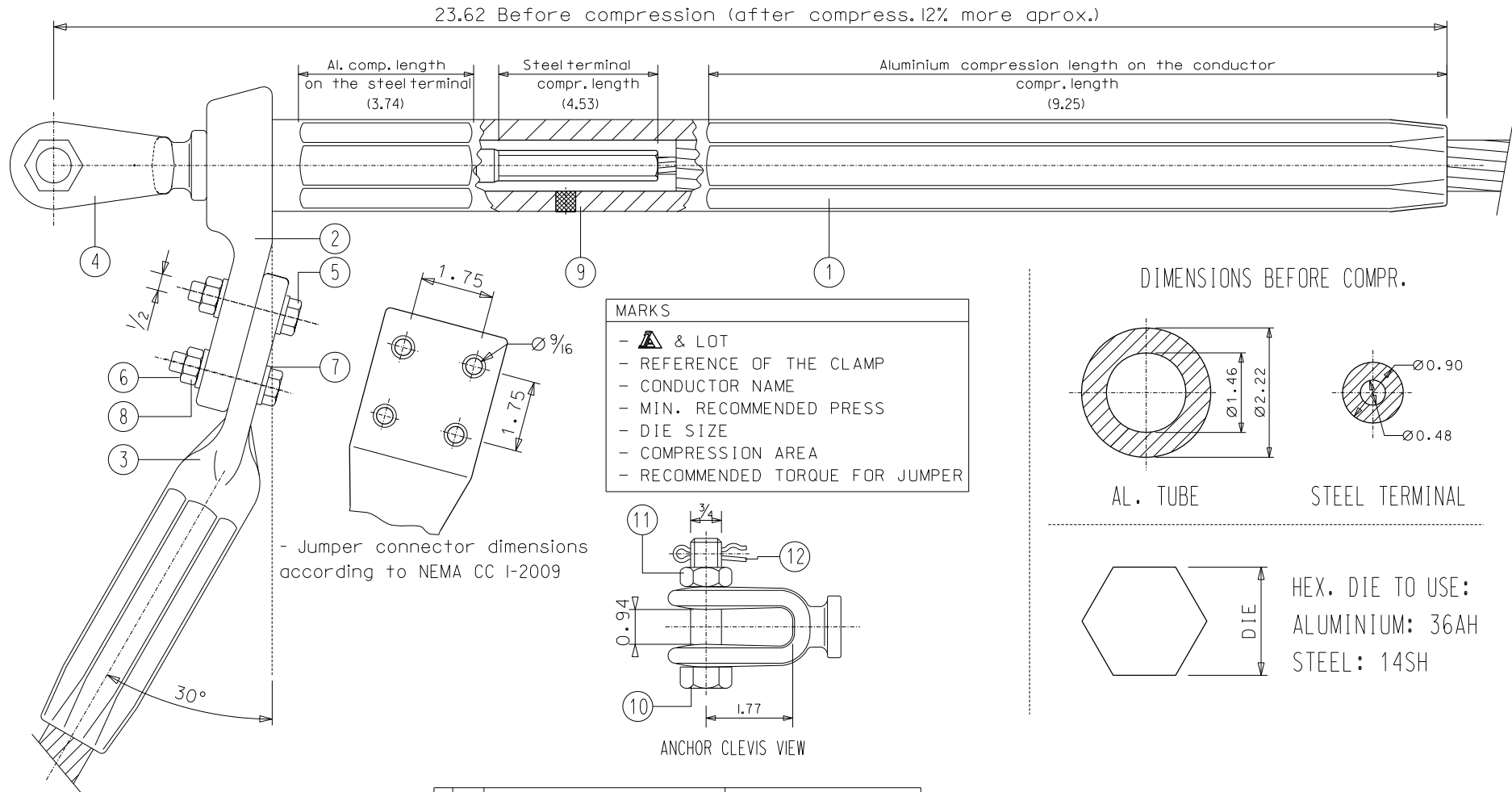


This drawing is property of I. Arruti and must not be copied, exhibited or furnished without the written consent of I. Arruti



- Jumper connector dimensions according to NEMA CC I-2009

MARKS	
-	▲ & LOT
-	REFERENCE OF THE CLAMP
-	CONDUCTOR NAME
-	MIN. RECOMMENDED PRESS
-	DIE SIZE
-	COMPRESSION AREA
-	RECOMMENDED TORQUE FOR JUMPER

Notes:

- Both sides of the pad are finished to present excellent electrical contact surfaces
- Electrical connection pads will be supplied with a protective covering
- Hot dip galvanized according to ASTM A153
- Tolerances unless otherwise stated to be up to and including 1.4" ±0.027 Over 1.4" ±2%
- All dimensions in inches

QTY	DENOMINATION	MATERIAL	CHECKED	I.L.	DATE	MODIFICATION	DRAWN BY	ISSUE
12	1	SAFETY PIN	STAINLESS STEEL					
11	1	NUT 3/4" ASME B18.2.2	STAINLESS STEEL					
10	1	BOLT 3/4" ASME B18.2.1	STAINLESS STEEL					
9	1	FILLER PLUG	ALUMINIUM					
8	4	SPRING LOCK 1/2" ASME B18.2.1	STAINLESS STEEL					
7	8	FLAT WASHER 1/2" ASME B18.2.1	STAINLESS STEEL					
6	4	HEX NUT 1/2" ASME B18.2.2	STAINLESS STEEL					
5	4	BOLT 1/2"x2.5 ASME B18.2.1	STAINLESS STEEL					
4	1	CLEVIS TERMINAL	FORGING STEEL GALV.					
3	1	JUMPER CONNECTOR DC-56,5	ALUMINIUM					
2	1	DEAD END LUG	ALUMINIUM					
1	1	CLAMP BODY	ALUMINIUM					
N	QTY	DENOMINATION	MATERIAL	CHECKED	I.L.	DATE	MODIFICATION	DRAWN BY



INDUSTRIAS ARRUTI S.A.

F 40513 NAME

DRAWN J.E.

CHECKED I.L.

CODE		UNIT (inch)	RECOMENDED TORQUE: 35 f+lb
CLEVIS TERMINAL COMPRESSION CLAMP CH-726/AM-IX FOR ACSR PHEASANT CONDUCTOR			Aprox. Weight: 16.58 lb
			U.S.: 95% of conductor R.B.S.
28-07-2	SCALE	DWG No	ISSUE
28-07-2	D/S	CH726AMIX	0

ARCHIVO: usacompression