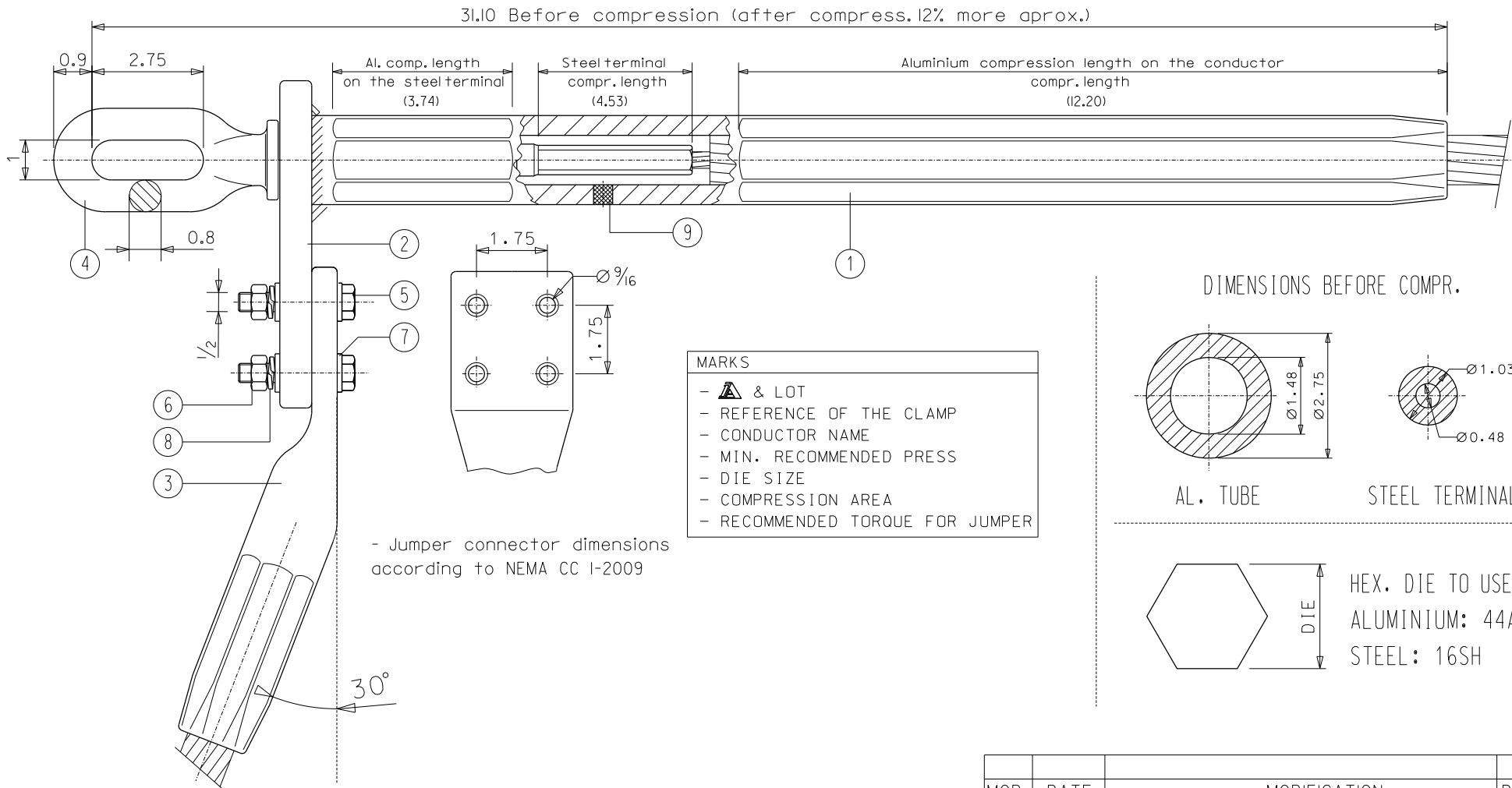
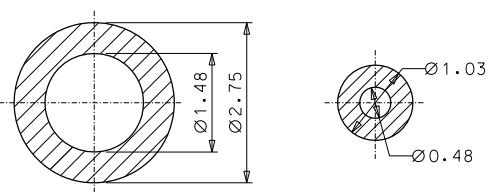


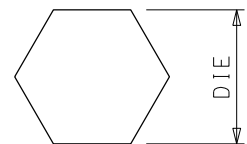
This drawing is property of I. Arruti and must not be copied, exhibited or furnished without the written consent of I. Arruti



DIMENSIONS BEFORE COMPR.



AL. TUBE STEEL TERMINAL



HEX. DIE TO USE:
ALUMINIUM: 44AH
STEEL: 16SH

ARCHIVO:usacompression

Notes:

- Both sides of the pad are finished to present excellent electrical contact surfaces
- Electrical connection pads will be supplied with a protective covering
- Hot dip galvanized according to ASTM A153
- Tolerances unless otherwise stated to be up to and including 1.4" mm. ±0.7 mm. Over 1.4" mm. ±2%
- All dimensions in inches

9	1	FILLER PLUG	ALUMINIUM
8	4	SPRING LOCK 1/2" ASME B18.21.1	STAINLESS STEEL
7	8	FLAT WASHER 1/2" ASME B18.21.1	STAINLESS STEEL
6	4	HEX NUT 1/2" ASME B18.2.2	STAINLESS STEEL
5	4	BOLT 1/2"x2.5 ASME B18.2.1	STAINLESS STEEL
4	1	EYE TERMINAL 7470-F	FORGING STEEL GALV.
3	1	JUMPER CONNECTOR DC-70	ALUMINIUM
2	1	DEAD END LUG	ALUMINIUM
1	1	CLAMP BODY	ALUMINIUM
N	QTY	DENOMINATION	MATERIAL

MOD.	DATE	MODIFICATION			DRAWN BY
		CODE			
		EYE TERMINAL COMPRESSION CLAMP C-726-SS/AM-IX FOR ACSS PHEASANT CONDUCTOR			
		UNIT (inch)	Recomended Torque: 35 f+lb		
			Aprox. Weight: 24.20 lb		
			U.S.: 95% of conductor R.B.S.		
			22-10-20	SCALE	DWG No
			22-10-20	D/S	C726SSAMIX
					0
		CHECKED	I.L.		
		DRAWN	J.E.		
		INDUSTRIAS ARRUTI S.A.			
		F 40513	NAME		