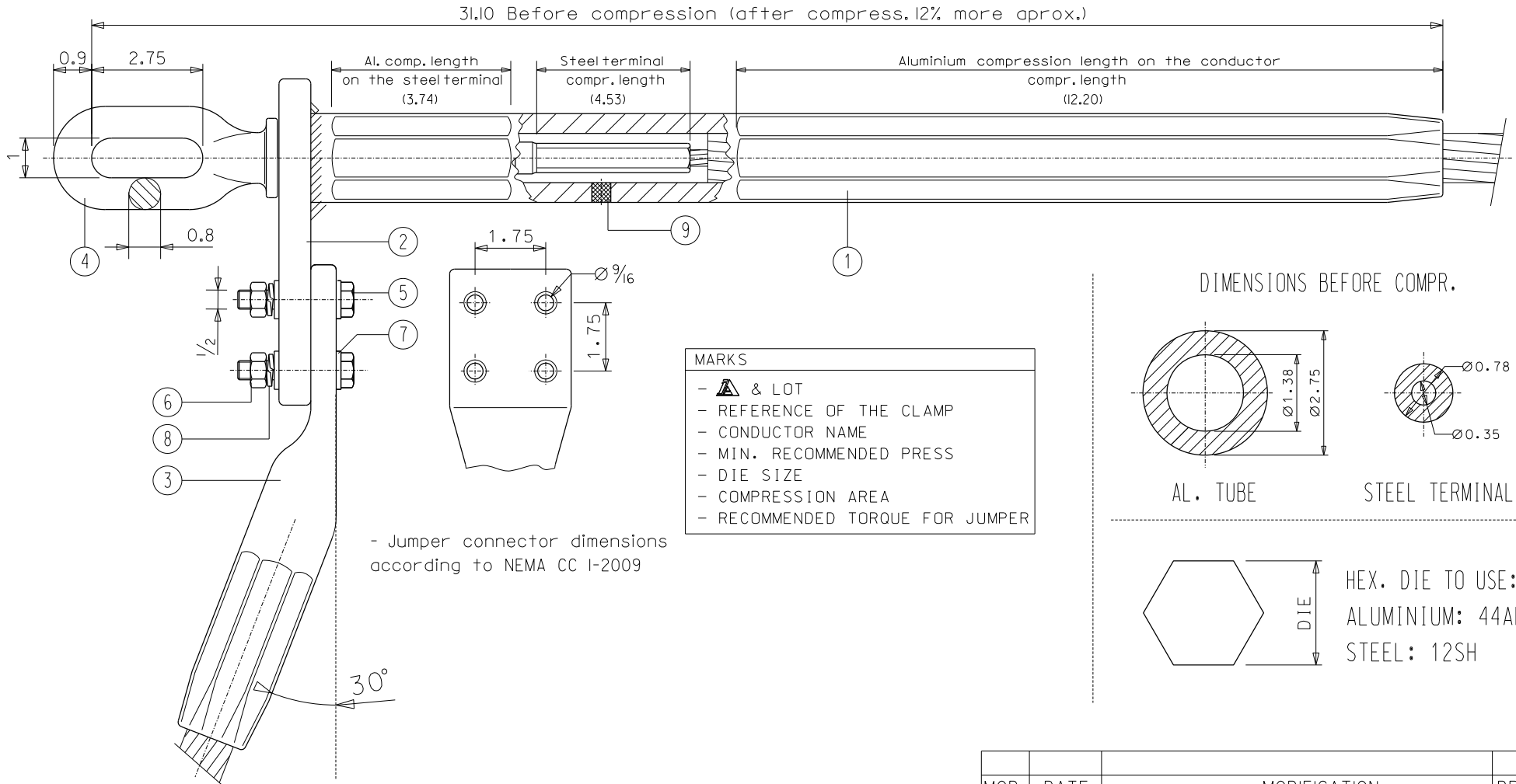
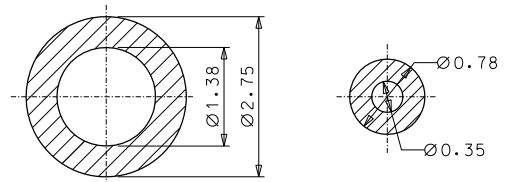


This drawing is property of I. Arruti and must not be copied, exhibited or furnished without the written consent of I. Arruti

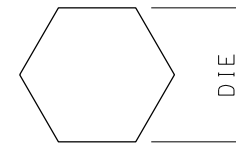


DIMENSIONS BEFORE COMPR.



AL. TUBE

STEEL TERMINAL



HEX. DIE TO USE:  
ALUMINIUM: 44AH  
STEEL: 12SH

ARCHIVO: usacompression

**Notes:**

- Both sides of the pad are finished to present excellent electrical contact surfaces
- Electrical connection pads will be supplied with a protective covering
- Hot dip galvanized according to ASTM A153
- Tolerances unless otherwise stated to be up to and including 1.4" mm. ±0.7 mm. Over 1.4" mm. ±2%
- All dimensions in inches

MOD.		DATE		MODIFICATION				DRAWN BY		
9	1	FILLER PLUG	ALUMINIUM	INDUSTRIAS ARRUTI S.A.					CODE	
8	4	SPRING LOCK 1/2" ASME B18.21.1	STAINLESS STEEL						EYE TERMINAL COMPRESSION CLAMP C-646-SS/AM-IX FOR ACSS BUNTING CONDUCTOR	
7	8	FLAT WASHER 1/2" ASME B18.21.1	STAINLESS STEEL	UNIT (inch)		Recomended Torque: 35 f+lb				
6	4	HEX NUT 1/2" ASME B18.2.2	STAINLESS STEEL	NAME		Aprox. Weight: 24.20 lb				
5	4	BOLT 1/2"x2.5 ASME B18.2.1	STAINLESS STEEL	DRAWN		U.S.: 95% of conductor R.B.S.				
4	1	EYE TERMINAL 7470-F	FORGING STEEL GALV.	CHECKED		03-II-20		SCALE	DWG No	ISSUE
3	1	JUMPER CONNECTOR DC-70	ALUMINIUM	I.L.		03-II-20		D/S	C646SSAMIX	0
2	1	DEAD END LUG	ALUMINIUM							
1	1	CLAMP BODY	ALUMINIUM							
N	QTY	DENOMINATION		MATERIAL						