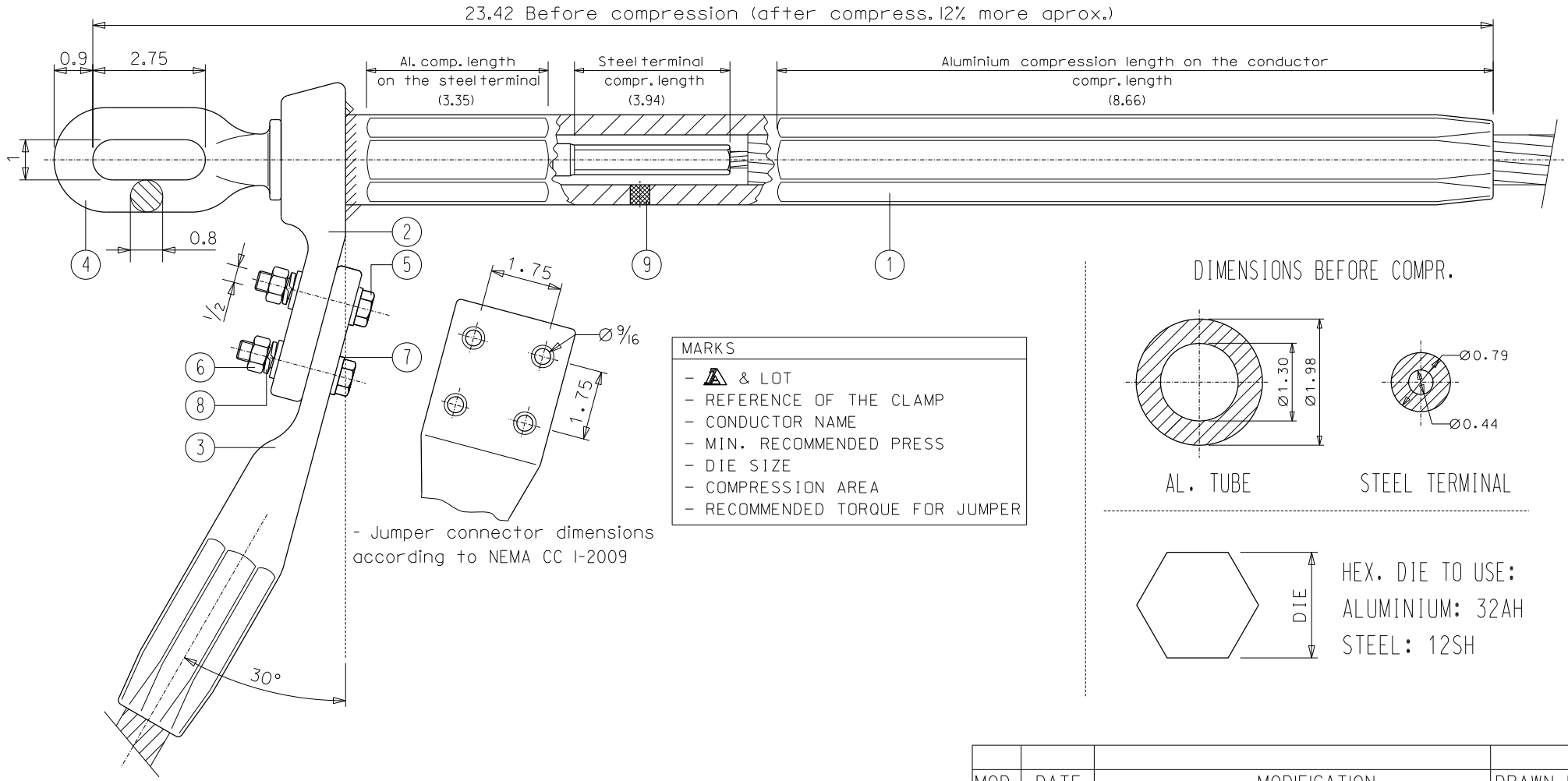


This drawing is property of I. Arruti and must not be copied, exhibited or furnished without the written consent of I. Arruti



Notes:

- Both sides of the pad are finished to present excellent electrical contact surfaces
- Electrical connection pads will be supplied with a protective covering
- Hot dip galvanized according to ASTM A153
- Tolerances unless otherwise stated to be up to and including 1.4" ±0.027 Over 1.4" ±2%
- All dimensions in inches

9	1	FILLER PLUG	ALUMINIUM
8	4	SPRING LOCK 1/2" ASME B18.21.I	STAINLES STEEL
7	8	FLAT WASHER 1/2" ASME B18.21.I	STAINLES STEEL
6	4	HEX NUT 1/2" ASME B18.2.2	STAINLES STEEL
5	4	BOLT 1/2"x2.5 ASME B18.2.1	STAINLES STEEL
4	1	EYE TERMINAL	FORGING STEEL GALV.
3	1	JUMPER CONNECTOR DC-50,4	ALUMINIUM
2	1	DEAD END LUG	ALUMINIUM
1	1	CLAMP BODY	ALUMINIUM
N	QTY	DENOMINATION	MATERIAL

MOD.	DATE	MODIFICATION		DRAWN BY
 INDUSTRIAS ARRUTI S.A.		CODE		
		EYE TERMINAL COMPRESSION CLAMP C-590/AM-IX FOR ACSR CURLEW CONDUCTOR		
		UNIT (inch)	Recomended Torque: 35 ftlb	
		Aprox. Weight: 13.20 lb		
		U.S.: 95% of conductor R.B.S.		
DRAWN	J.E.	09-09-20	SCALE	DWG No
CHECKED	I.L.	09-09-20	D/S	C590AMIX
				ISSUE
				0

ARCHIVO-usocompression