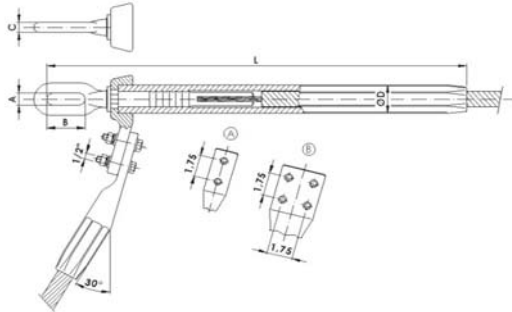




Industrias Arruti

ALL ALLOY ALUMINIUM CONDUCTORS (AAAC)



ALL ALLOY ALUMINIUM CONDUCTORS (AAAC)														
Conductor			Compression fittings								Length Before Compression Inches			
Name	Ø Ext. (inch)	Section (kcmil)	Dead End Clamp	Compression Joints	Repair Sleeves	T Bolted Connectors (NEMA 4)	Jumper Connectors	Series	Die Size	NEMA	L	A	B	C
AMHERST	0.5	195.7	C-99-AA/AM-IX	EC-99-AA/AM			DC-30x14	30	76AH	2	16.33	2.38	0.88	0.57
ASTER-117	0.55	230.86	C-117-AA/AM-IX	EC-117-AA/AM	ER-30/AM	DR-30/P4/AM		30	76AH	2	16.33	2.38	0.88	0.57
OAK	0.55	234.65	C-119-AA/AM-IX	EC-119-AA/AM				30	76AH	2	16.33	2.38	0.88	0.57
ALLIANCE	0.56	246.9	C-125-AA/AM-IX	EC-125-AA/AM			DC-30x16	30	76AH	2	16.33	2.38	0.88	0.57
ASTER-148	0.62	292.1	C-148-AA/4/AM-IX	EC-148-AA/AM			DC-34.5x17	34.5	15AH	4	17.12	2.16	0.9	0.7
BUTTE	0.64	312.8	C-158-AA/AM-IX	EC-158-AA/AM	ER-34.5/AM	DR-34.5/P4/AM		34.5	15AH	2	17.12	2.16	0.9	0.7
ASTER-181-6	0.69	358.43	C-181-AA/4/AM-IX	EC-181-AA/AM				34.5	15AH	4	17.12	2.16	0.9	0.7
CANTON	0.72	394.5	C-200-AA/AM-IX	EC-200-AA/AM			DC-34.5x20	34.5	15AH	2	17.12	2.16	0.9	0.7
ASTER-228	0.77	449.63	C-228-AA/AM-IX	EC-228-AA/AM			DC-38.5x21	38.5	24AH	2	17.32	2.16	0.9	0.7
CAIRO	0.78	465.4	C-236-AA/AM-IX	EC-236-AA/AM	ER-38.5/AM	DR-38.5/P4/AM		38.5	24AH	2	17.32	2.16	0.9	0.7
DARIEN	0.86	559.5	C-283-AA/AM-IX	EC-283-AA/AM				38.5	24AH	2	17.32	2.16	0.9	0.7
ASTER-288	0.87	569.05	C-288-AA/AM-IX	EC-288-AA/AM			DC-38.5x23.5	38.5	24AH	2	17.32	2.16	0.9	0.7
ELGIN	0.93	652.4	C-330-AA/AM-IX	EC-330-AA/AM			DC-43.5x25	43.5	27AH	2	20.86	2.75	1	0.8
ASTER-366	0.98	722.74	C-366-AA/AM-IX	EC-366-AA/AM	ER-43.5/AM	DR-43.5/P4/AM		43.5	27AH	2	20.86	2.75	1	0.8
FLINT	0.99	740.8	C-375-AA/AM-IX	EC-375-AA/AM				43.5	27AH	2	20.86	2.75	1	0.8
GREELEY	1.11	927.2	C-470-AA/AM-IX	EC-470-AA/AM	ER-47.5/AM	DR-47.5/P4/AM	DC-47.5x29.5	47.5	30AH	4	21.65	2.75	1	0.8
ASTER-570	1.22	1125.34	C-570-AA/AM-IX	EC-570-AA/AM	ER-50.4/AM	DR-50.4/P4/AM	DC-50.4x32.5	50.4	32AH	4	23.03	2.75	1	0.8
TILLER	1,65	1038,6	C-1038-AA/AM-IX	EC-1038-AA/AM	ER-66/AM	DR-66/P4/AM	DC-66x43.5	66	42AH	4	32,67	2,75	1	0,8

Dead end clamps could be supplied with simple or double tongue.
 Jumper connectors can be supplied straight and with or without bolts, nuts & washers
 Clamps and components for other conductors on request.

