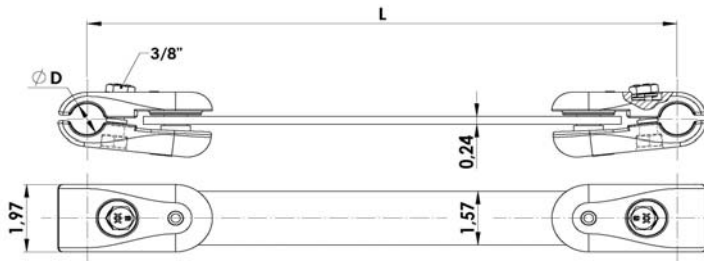




Industrias Arruti

## SP-2 SPACERS FOR TWIN BUNDLE



Material: Clamp: Aluminum EN-1706 (similar to ANSI A413.0).			Bolt: ASTM A325.		
Platen: Steel plate EN-10025 (similar to ASTM A36 or ASTM A572).			Nut: ASTM A563.		
Steel Parts finish: Hot dip galvanising ASTM A153.					
Reference	Ø Conductor (inch)		Dimensions (inch)	Tightening Torque (ftlb)	Weight (lb)
	Min.	Max.			
SP-2/17-20/L/AM	0,67	0,79	L	20	-
SP-2/20-23/L/AM	0,79	0,91	L	20	-
SP-2/23-26/L/AM	0,91	1,02	L	20	-
SP-2/26-29/L/AM	1,02	1,14	L	20	-
SP-2/29-32/L/AM	1,14	1,26	L	20	-
SP-2/32-35/L/AM	1,26	1,38	L	20	-

NOTE: "L" lengths upon request.

Special fasteners upon request.