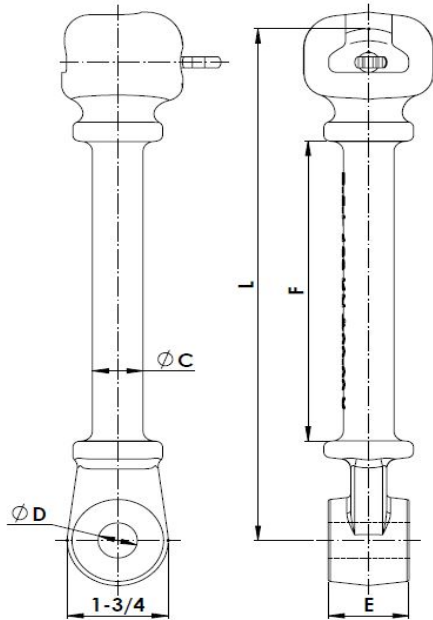


HOT LINE SOCKET EYE



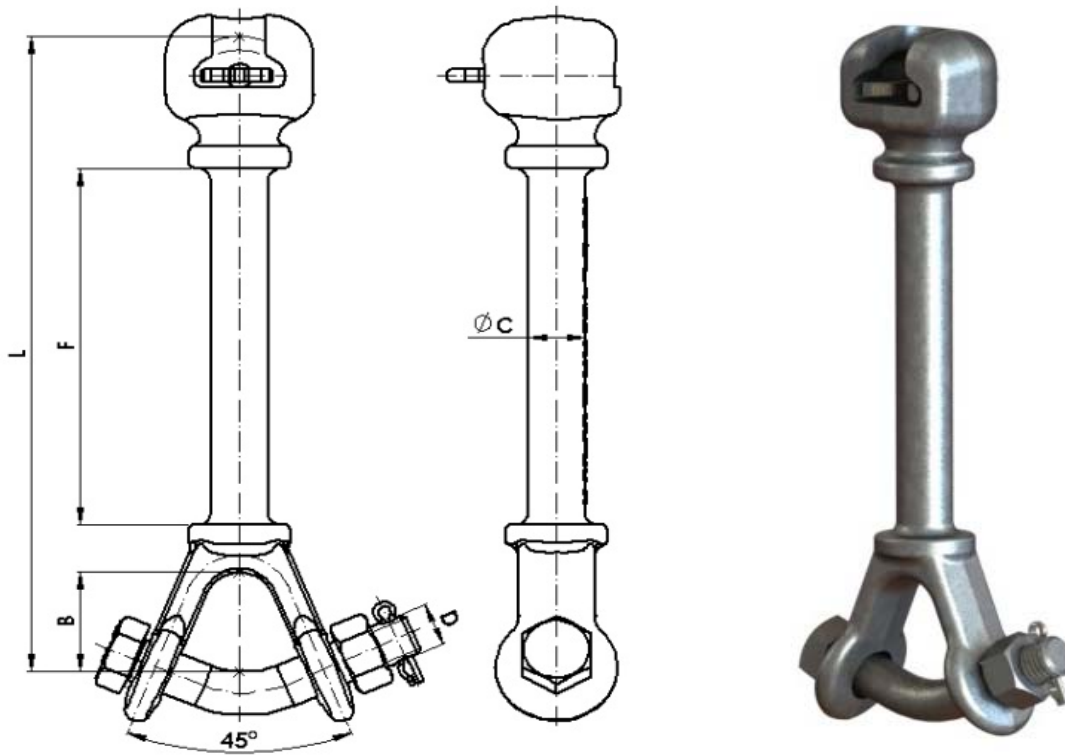
Material: Forged steel EN-10083 (Equivalent to ASTM A576). Steel parts finish: Hot dip galvanising ASTM A153.							Locking pin: Stainless steel.	
Reference	Standard	Dimensions (Inch)					Ultimate Strength (lb)	Weight (lb)
		C	D	E	F	L		
R-5-L/16/AM	ANSI 52-5	7/8	11/16	5/8	5-7/8	10.00	30,000	3.30
R-5-L/18/AM	ANSI 52-5	7/8	11/16	11/16	5-7/8	10.00	30,000	3.41
R-5-L/19/AM	ANSI 52-5	7/8	11/16	3/4	5-7/8	10.00	30,000	3.43
R-5-L/21/AM	ANSI 52-5	7/8	11/16	13/16	5-7/8	10.00	30,000	3.48
R-5-L/26/AM	ANSI 52-5	7/8	11/16	1	5-7/8	10.00	30,000	3.54
R-5-L/36/AM	ANSI 52-5	7/8	11/16	1-27/64	5-7/8	10.00	30,000	3.65
R-5-L/45/AM	ANSI 52-5	7/8	11/16	1-3/4	5-7/8	10.00	30,000	3.80
R-5-L/19/AM ($\phi 13/16$)	ANSI 52-5	7/8	13/16	13/16	5-7/8	10.00	30,000	3.50
R-5-L/21/AM ($\phi 13/16$)	ANSI 52-5	7/8	13/16	3/4	5-7/8	10.00	30,000	3.45

NOTE: Other dimension "E" and "D" can be manufactured upon request.



Industrias Arruti

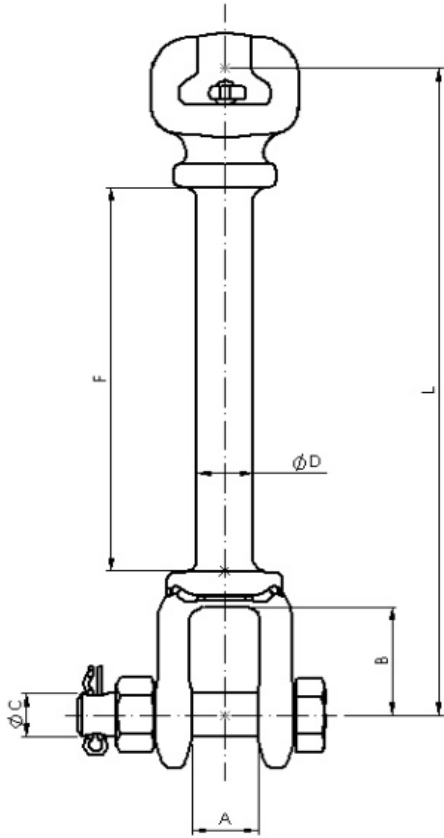
HOT LINE SOCKET Y CLEVIS



Material: Forged steel EN-10083 (equivalent to ASTM A576). Steel parts finish: Hot dip galvanising ASTM A153.		Locking pin: Stainless steel. (AISI 304) Bolt: ASTM A325 Nuts: ASTM A563						
Reference	Standard	Dimensions (Inch)					Ultimate Strength (lb)	Weight (lb)
		B	C	D	F	L		
RV-5-L/AM	ANSI 52-5	1-5/8	7/8	3/4	5-7/8	10-3/8	30,000	4.50
RV-8-L/AM	ANSI 52-8 & ANSI 52-11	1-5/8	7/8	7/8	5-7/8	10-3/8	50,000	6.40

Note: Special fasteners upon request.

HOT LINE SOCKET CLEVIS



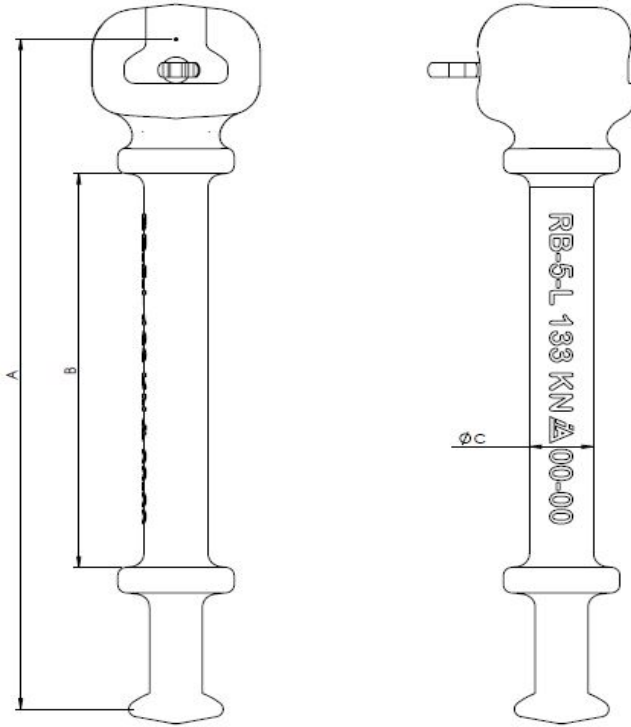
Material: Forged steel EN-10083 (equivalent to ASTM A576).
Steel parts finish: Hot dip galvanising ASTM A153.

Locking pin: Stainless steel. (AISI 304)
Bolt: ASTM A325
Nuts: ASTM A563

Reference	Standard	Dimensions (Inch)						Ultimate (lb)	Weight (lb)
		A	B	C	D	F	L		
RH-5-L/AM	ANSI 52-5	1	1-1/2	5/8	7/8	5-7/8	10	30,000	3.62

Note: Special fasteners upon request.

HOT LINE SOCKET BALL



Material: Forged steel EN-10083 (similar to ASTM A576).
Steel parts finish: Hot dip galvanising ASTM A153.

Locking pin: Stainless steel.

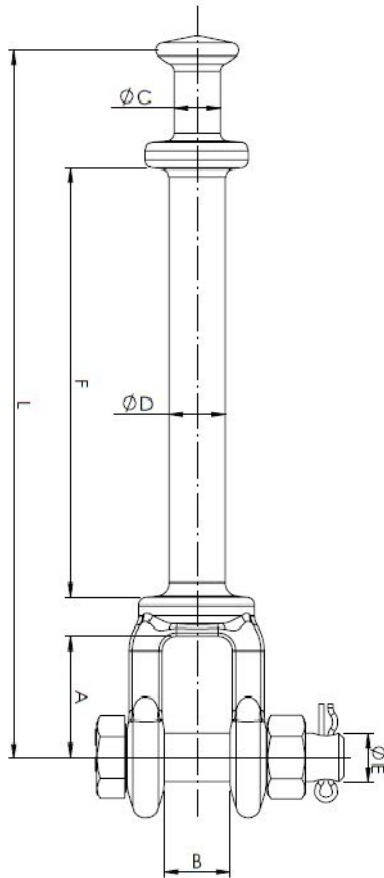
Reference	Standard	Dimensions (Inch)			Ultimate Strength (lb)	Weight (lb)
		A	B	C		
RB-5-L/AM	ANSI 52-5	10	5-7/8	7/8	30,000	3,00

Note: Special fasteners upon request.



Industrias Arruti

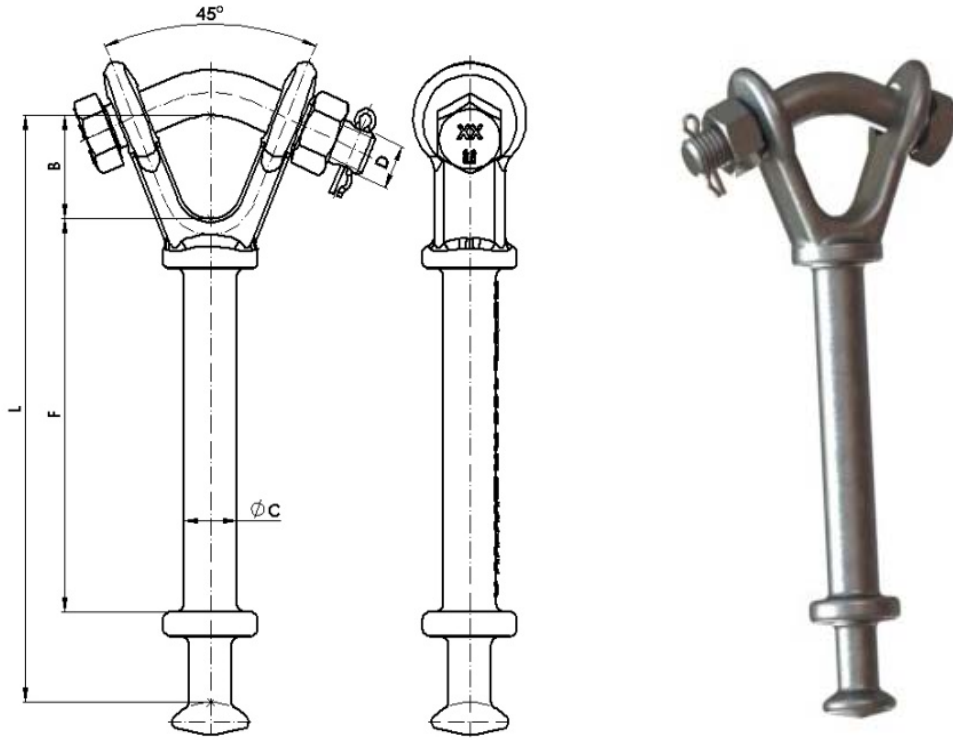
HOT LINE BALL CLEVIS



Material: Forged steel EN-10083 (equivalent to ASTM A576). Steel parts finish: Hot dip galvanising ASTM A153.		Locking pin: Stainless steel. (AISI 304) Bolt: ASTM A325 Nuts: ASTM A563								
Reference	Standard	Dimensions (Inch)							Ultimate Strength (lb)	Weight (lb)
		A	B	C	D	E	F	L		
HBP-5-L/AM	ANSI 52-5	1-3/4	1	23/32	7/8	5/8	5-7/8	9-9/16	30,000	2.43
HBP-8-L/AM	ANSI 52-8 & ANSI 52-11	1-7/8	1	57/64	7/8	7/8	5-3/8	10-1/16	50,000	3.58

Note: Special fasteners upon request.

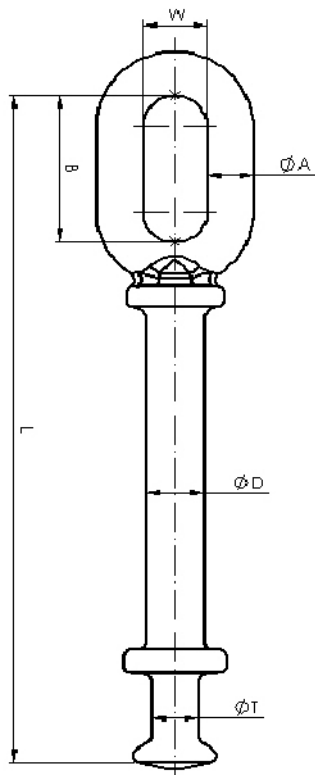
HOT LINE BALL Y CLEVIS



Material: Forged steel EN-10083 (equivalent to ASTM A576). Steel parts finish: Hot dip galvanising ASTM A153.				Locking pin: Stainless steel. (AISI 304) Bolt: ASTM A325 Nuts: ASTM A563				
Reference	Standard	Dimensions (Inch)					Ultimate Strength (lb)	Weight (lb)
		B	C	D	F	L		
HB-5-L/AM	ANSI 52-5	1-5/8	7/8	3/4	6-9/64	9-7/32	30,000	3.24
HB-8-L/AM	ANSI 52-8 & ANSI 52-11	1-5/8	7/8	7/8	6-9/64	9-3/8	50,000	4.37

Note: Special fasteners upon request.

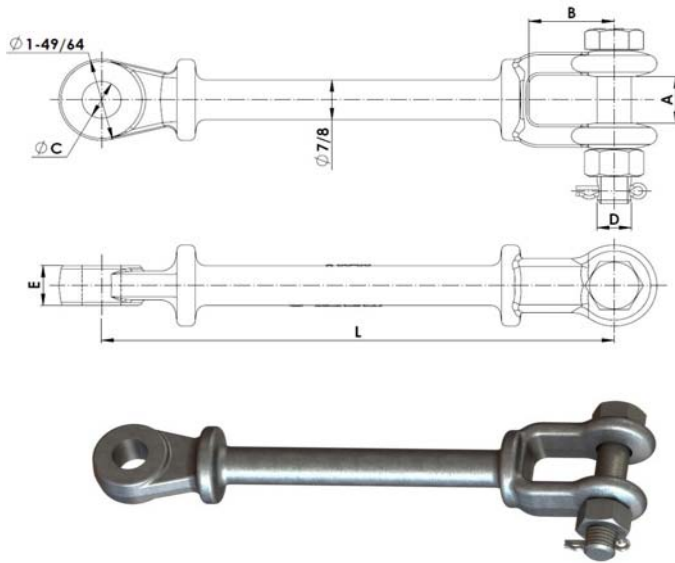
HOT LINE BALL EYE



Material: Forged steel EN-10083 (Equivalent to ASTM A576).
Steel parts finish: Hot dip galvanising ASTM A153.

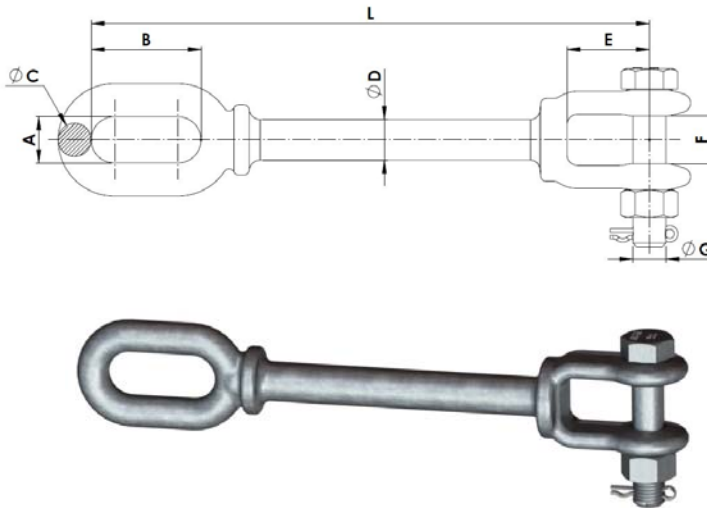
Reference	Standard IEC/ANSI	Dimensions (Inch)						Ultimate Strength (lb)	Weight (lb)
		A	B	D	T	W	L		
AB-5-L/AM	ANSI 52-5	45/64	2-23/64	7/8	22/32	1	11	30,000	2.51

HOT LINE CLEVIS EYE



Material: Forged steel EN-10083 (equivalent to ASTM A576). Steel parts finish: Hot dip galvanising ASTM A153.							Locking pin: Stainless steel. (AISI 304) Bolt: ASTM A325 Nuts: ASTM A563	
Reference	Dimensions (Inch)						Ultimate Strength (lb)	Weight (lb)
	A	B	C	D	E	L		
A-12/16/AM	63/64	1-49/64	11/16	5/8	5/8	10-20/32	30,000	3.53
A-18/26/AM	63/64	1-49/64	13/16	3/4	7/8	10-20/32	40,000	3.66
A-25/AM	63/64	1-49/64	15/16	7/8	7/8	10-20/32	56,000	3.75

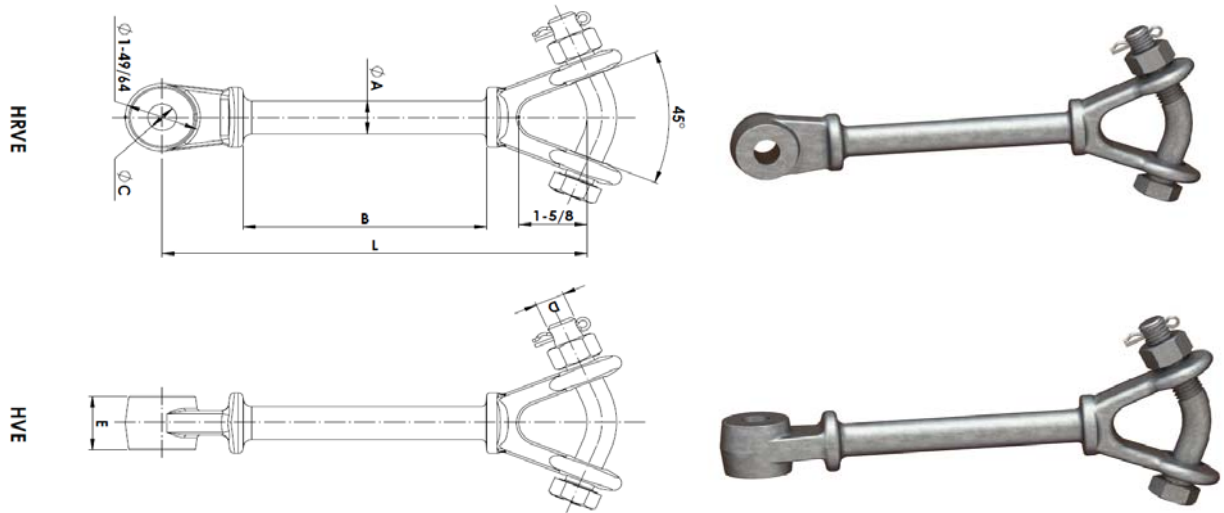
NOTE: Other dimension "C" and "E" can be manufactured upon request.
Special fasteners upon request.



Material: Forged steel EN-10083 (equivalent to ASTM A576). Steel parts finish: Hot dip galvanising ASTM A153.								Locking pin: Stainless steel. (AISI 304) Bolt: ASTM A325 Nuts: ASTM A563		
Reference	Dimensions (Inch)							Ultimate Strength (lb)	Weight (lb)	
	A	B	ØC	ØD	E	F	ØG			
AH-24/12-AM	15/16	2-3/8	3/4	7/8	2-1/8	1-1/4	7/8	12	53,000	3.25

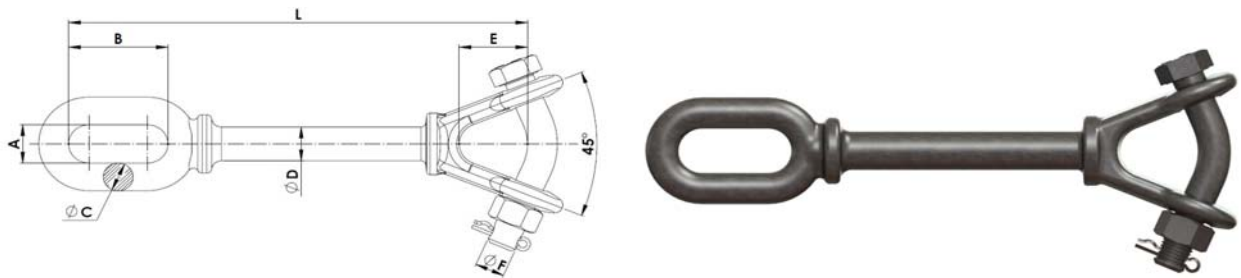
Note: Special fasteners upon request.

HOT LINE Y CLEVIS EYE



Material: Forged steel EN-10083 (equivalent to ASTM A576). Steel parts finish: Hot dip galvanising ASTM A153.				Locking pin: Stainless steel. (AISI 304) Bolt: ASTM A325 Nuts: ASTM A563				
Reference	Dimensions (Inch)						Ultimate Strength (lb)	Weight (lb)
	A	B	C	D	E	L		
HVE-5-L	7/8	6-3/8	11/16	3/4	5/8	11	30,000	4.4
HRVE-5-L	7/8	6-3/8	11/16	3/4	5/8	11	30,000	4.4

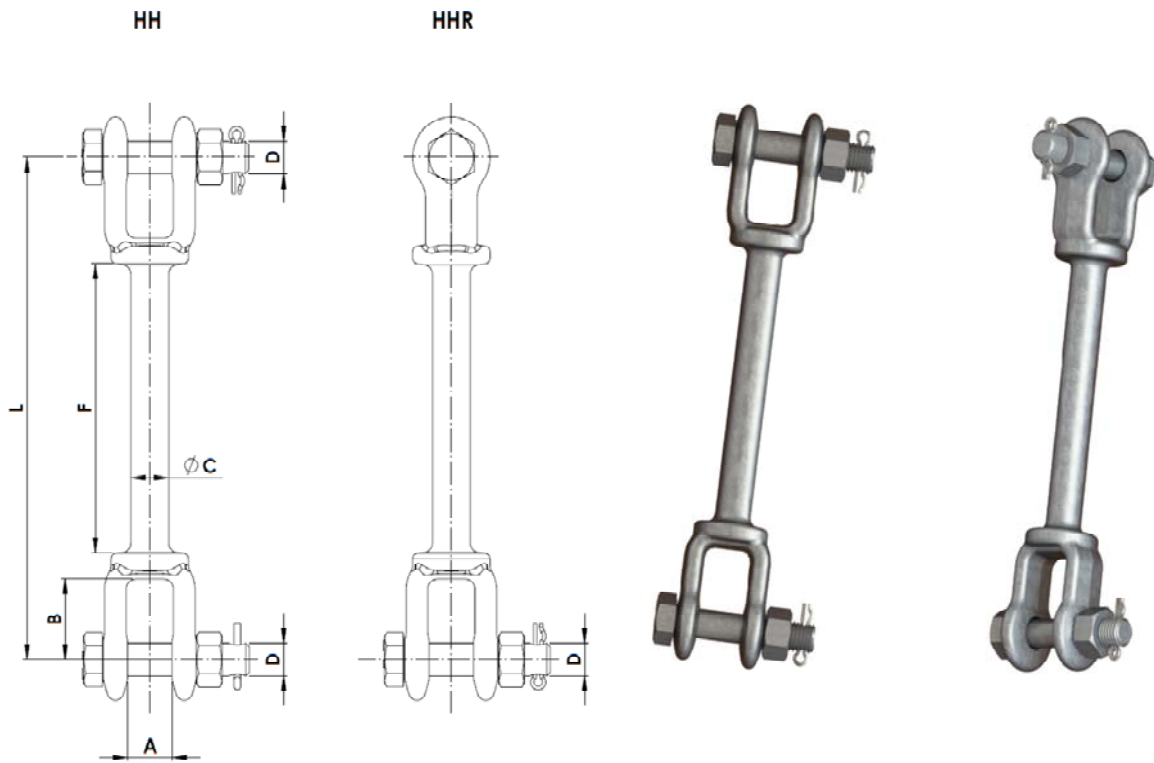
Note: Special fasteners upon request.



Material: Forged steel EN-10083 (equivalent to ASTM A576). Steel parts finish: Hot dip galvanising ASTM A153.						Locking pin: Stainless steel. (AISI 304) Bolt: ASTM A325 Nuts: ASTM A563			
Reference	Dimensions (Inch)							Ultimate (lb)	Weight (lb)
	A	B	ØC	ØD	E	ØF	L		
AHY-24/18-AM	1	2-3/8	3/4	7/8	1-11/16	7/8	18	53,000	4.50
AHY-24/36-AM	1	2-3/8	3/4	7/8	1-11/16	7/8	36	53,000	8.50

Note: Special fasteners upon request.

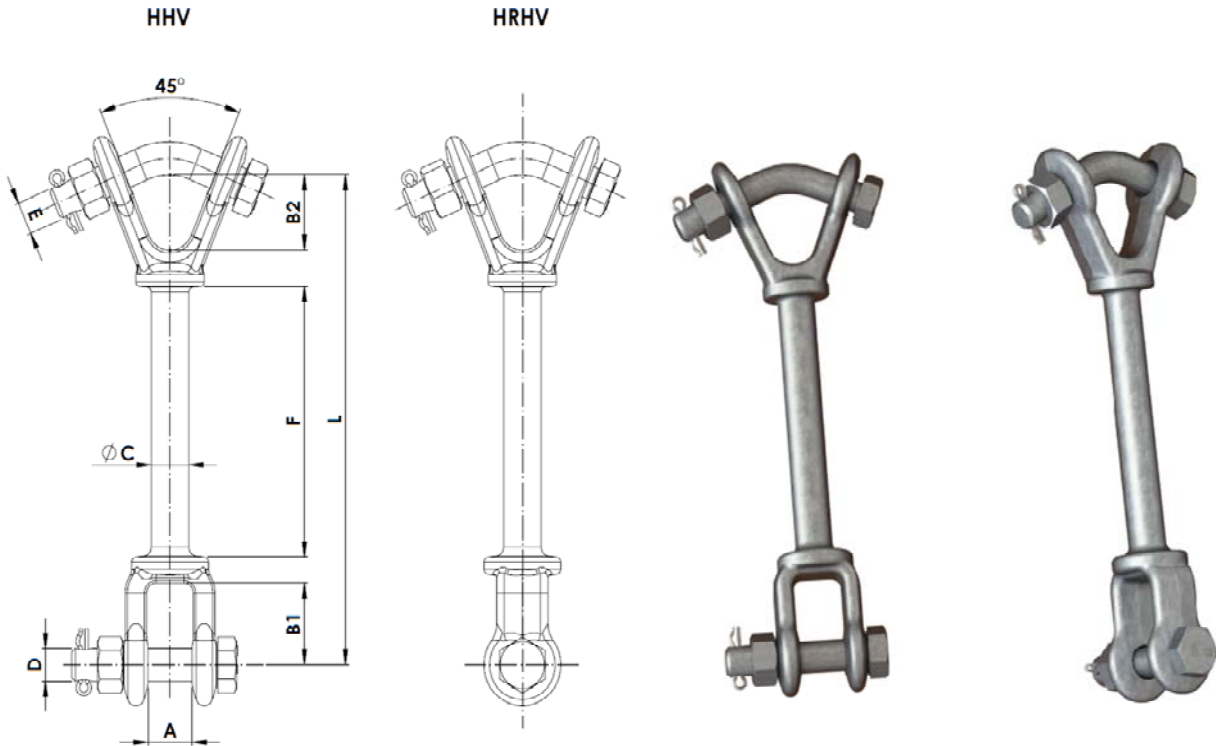
HOT LINE CLEVIS CLEVIS



Reference		Dimensions (Inch)					Ultimate (lb)	Weight (lb)	
		A	B	C	D	F			L
HH-5-L		1	1-5/8	7/8	5/8	6	10	30,000	3.40
HHR-5-L		1	1-5/8	7/8	5/8	6	10	30,000	3.40

Note: Special fasteners upon request.

HOT LINE Y CLEVIS CLEVIS



Material: Forged steel EN-10083 (equivalent)
 מוצר פלדה מובחרת, מוצר מוגן גלילציה אס 10083
 A152

Locking pin: Stainless steel. (AISI 304)

Bolt: ASTM A325

Nuts: ASTM A563

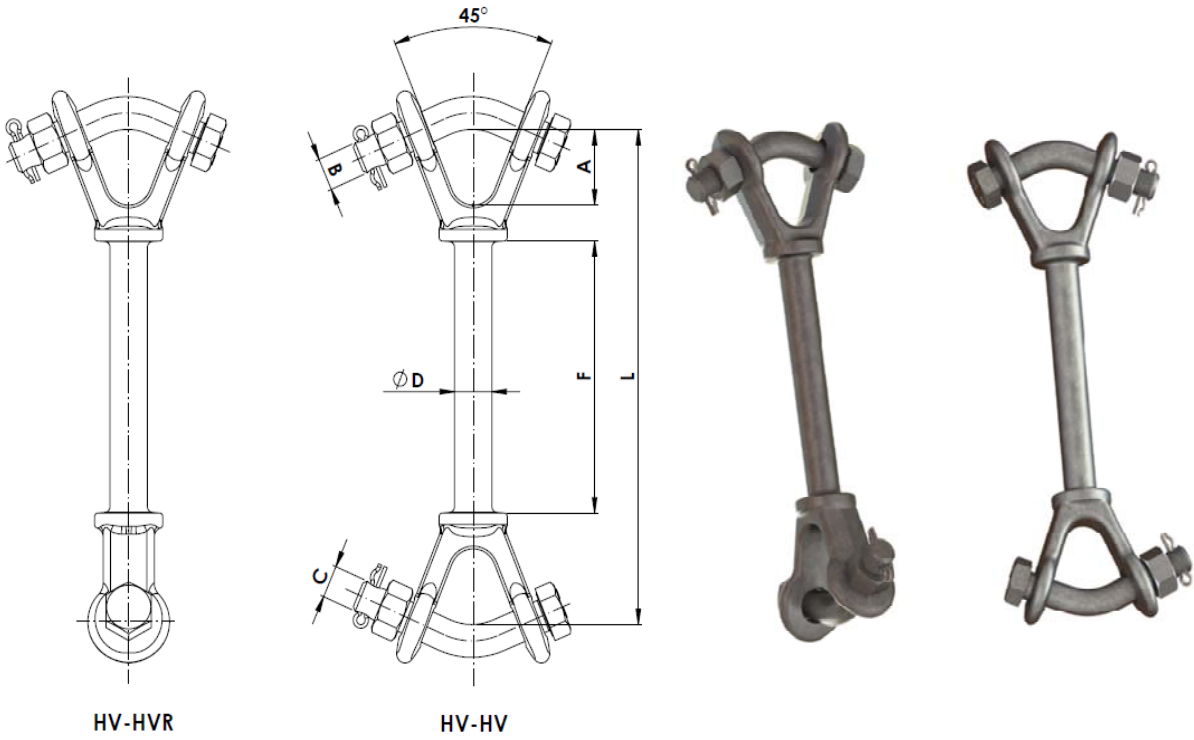
Reference	Dimensions (Inch)								Ultimate Strength	Weight
	A	B1	B2	C	D	E	F	L	(lb)	(lb)
HHV-5-L	1	1-5/8	1-5/8	7/8	5/8	3/4	6-1/4	10-3/8	30,000	3.5
HRHV-5-L	1	1-5/8	1-5/8	7/8	5/8	3/4	6-1/4	10-3/8	30,000	3.5

Note: Special fasteners upon request.



Industrias Arruti

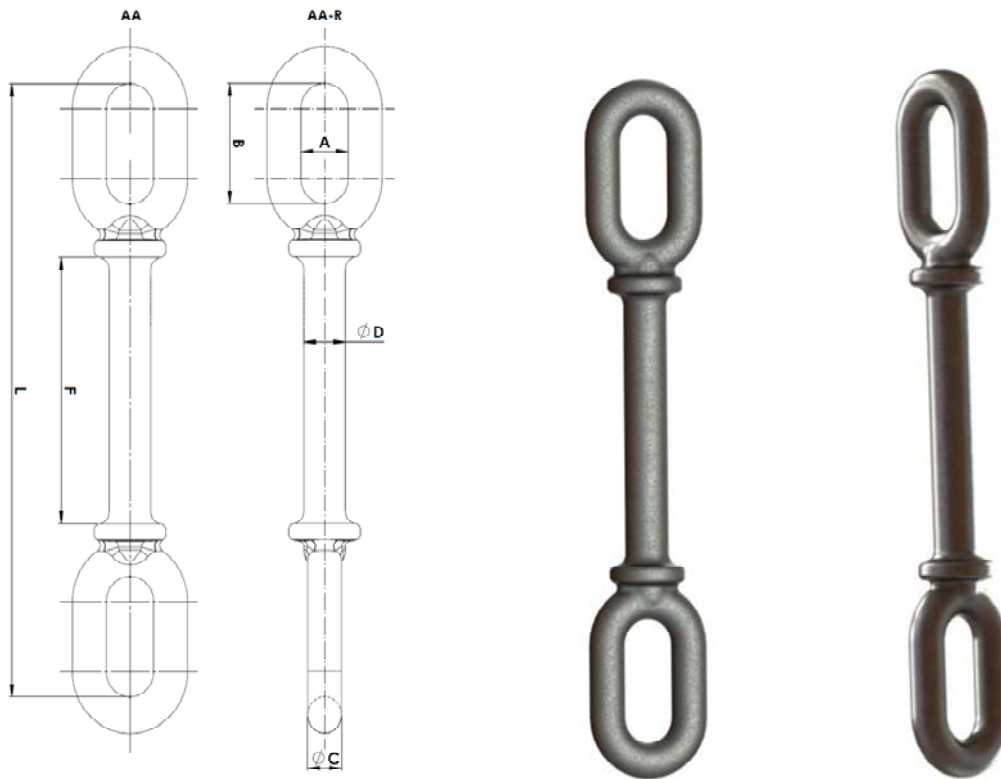
HOT LINE Y-Y CLEVIS



Material: Forged steel EN-10083 (equivalent to steel parts finish. Hot dip galvanising ASTM A153)							Locking pin: Stainless steel. (AISI 304) Bolt: ASTM A325 Nuts: ASTM A563	
Reference	Dimensions (Inch)						Ultimate Strength	Weight
	A	B	C	D	F	L	(lb)	(lb)
HV-HV-5-L	1-5/8	3/4	5/8	7/8	6-1/4	10-3/8	30,000	4.62
HV-HVR-5-L	1-5/8	3/4	5/8	7/8	6-1/4	10-3/8	30,000	4.62
HV-HV-8-L	1-5/8	7/8	3/4	1-1/8	6-1/4	10-1/8	50,000	9.34
HV-HVR-8-L	1-5/8	7/8	3/4	1-1/8	6-1/4	10-1/8	50,000	9.34

Note: Special fasteners upon request.

HOT LINE EYE EYE



Material: Forged steel EN-10083 (similar to ASTM A576).
Steel parts finish: Hot dip galvanising ASTM A153.

Reference	Dimensions (Inch)						Ultimate Strength (lb)	Weight (lb)
	A	B	C	D	F	L		
AA-14-14,5	15/16	2-1/8	11/16	7/8	5-1/4	14-1/2	30,000	3.25
AA-14-17,5	15/16	2-1/8	11/16	7/8	5-1/4	17-1/2	30,000	3.95
AA-14-30,5	15/16	2-1/8	11/16	7/8	5-1/4	30-1/2	30,000	6.60
AA-14-35	15/16	2-1/8	11/16	7/8	5-1/4	35	30,000	7.50
AA-24/AM	63/64	2-23/64	3/4	7/8	5-1/4	12	54,000	3.09
AA-24-R/AM	63/64	2-23/64	3/4	7/8	5-1/4	12	54,000	3.09

Note: Other dimension can be manufactured upon request.