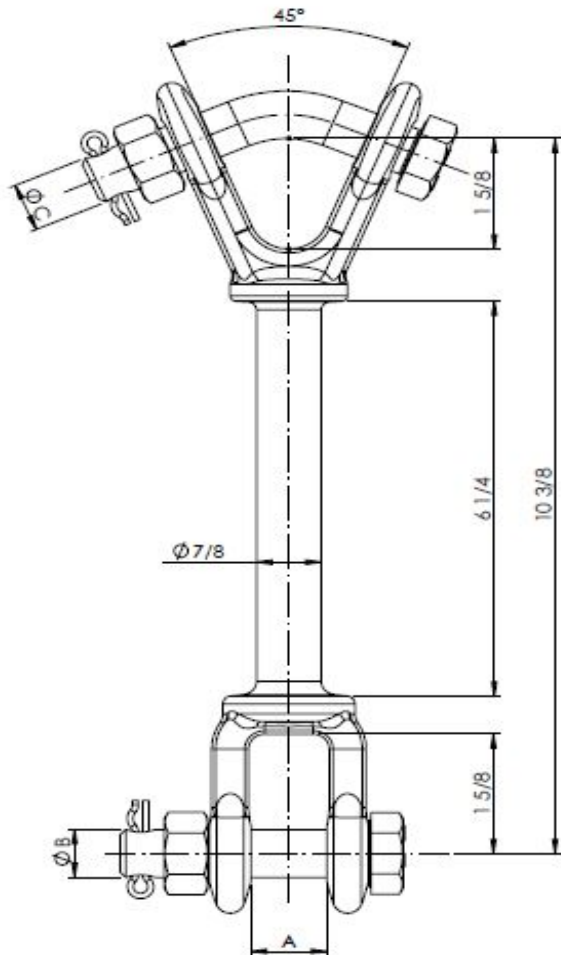




Industrias Arruti

**6.6 HOT LINE Y CLEVIS CLEVIS**



**Material:** Forged steel EN-10083 (Equivalent to ASTM A576). **Locking pin:** Stainless steel.  
**Steel parts finish:** Hot dip galvanising ASTM A153.

Reference	Dimensions (Inch)			Ultimate Strength (lb)	Weight (lb)
	A	B	C		
HHV-5-L	1	5/8	3/4	30,000	3.5
HHV-5-L-(R)	1	5/8	3/4	30,000	3.5

**Note:** Special fasteners upon request.  
 Bolt: ASTM A325 / Nuts: ASTM A563