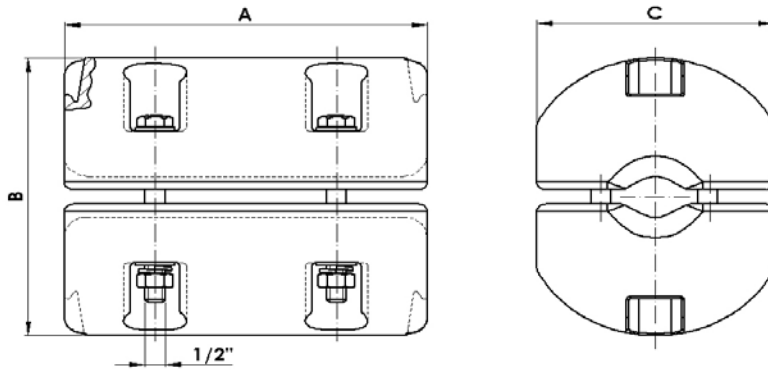




Industrias Arruti

05 JUMPER COUNTERWEIGHTS 30



Material: Body: Cast iron EN-1563 (similar to ASTM A48).
Steel parts finish: Hot dip galvanising ASTM A153.

Reference	Ø Conductor		Dimensions (inch)			Protector Plaque	Tightening Torque (ftlb)	Weight (lb)
	Min.	Max.	A	B	C			
CPB-30/12/AM	5/16	15/32	8/21-32	7-3/32	5-43/64	NO	30	66.14
CPB-30/18/AM	15/32	45/64	8/21-32	7-3/32	5-43/64	NO	30	66.14
CPB-30/26/AM	45/64	1-1/64	8/21-32	7-3/32	5-43/64	NO	30	66.14
CPB-30/32/AM	1-1/64	1-17/64	8/21-32	7-3/32	5-43/64	NO	30	66.14
CPB-30/40/AM	1-17/64	1-37/64	8/21-32	7-3/32	5-43/64	NO	30	66.14
CPB-30/12/P/AM	5/16	15/32	8/21-32	7-3/32	5-43/64	YES	30	66.14
CPB-30/18/P/AM	15/32	45/64	8/21-32	7-3/32	5-43/64	YES	30	66.14
CPB-30/26/P/AM	45/64	1-1/64	8/21-32	7-3/32	5-43/64	YES	30	66.14
CPB-30/32/P/AM	1-1/64	1-17/64	8/21-32	7-3/32	5-43/64	YES	30	66.14
CPB-30/40/P/AM	1-17/64	1-37/64	8/21-32	7-3/32	5-43/64	YES	30	66.14

NOTE: Special fasteners upon request.

Bolt: ASTM A325. / **Nuts:** ASTM A563.