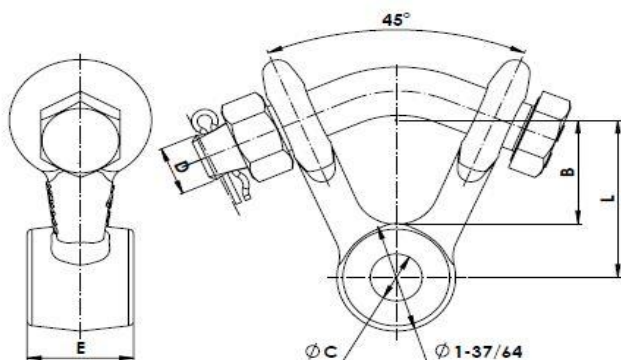




Industrias Arruti

3.4 Y-CLEVIS EYE ROTATE



Material: Forged steel EN-10083 (equivalent to ASTM A576).		Locking pins: Stainless Steel (AISI 304)					
Steel parts finish: Hot dip galvanising ASTM A153.		Bolt: ASTM A325	Nut: ASTM A563				
Reference	Dimensions Inches					Ultimate Strength (lb)	Weight (lb)
	B	C	D	E	L		
HRV-16/(5/8-Ø11/16)	1-5/8	11/16	3/4	5/8	2-13/32	30,000	1.65
HRV-16/(53/64-Ø11/16)	1-5/8	11/16	3/4	53/64	2-13/32	30,000	1.65
HRV-16/(1-Ø11/16)	1-5/8	11/16	3/4	1	2-13/32	30,000	1.76
HRV-16/(1-27/64-Ø11/16)	1-5/8	11/16	3/4	1-27/64	2-13/32	30,000	1.98
HRV-16/(1-3/4-Ø11/16)	1-5/8	11/16	3/4	1-3/4	2-13/32	30,000	2.09

NOTE: Other dimensions "E" and "C" can be manufactured upon request.
Special fasteners upon request.