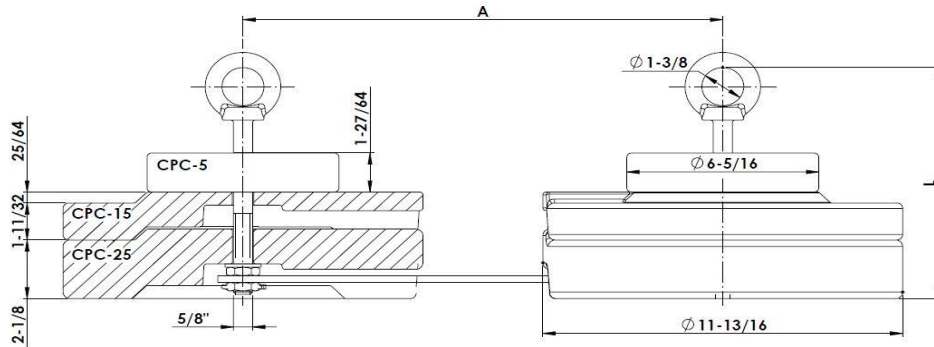




Industrias Arruti

02 CYLINDRICAL COUNTERWEIGHTS for TWIN BUNDLE



Material: Body: Cast iron EN-1563 (similar to ASTM A48). **Locking Pins:** Stainless Steel (AISI 304)
Steel parts finish: Hot dip galvanising ASTM A153. **Nuts:** ASTM A563.

Reference	Weight (lb)	Number of counterweights			Eye bolt	Dimensions (inch)	
		CPC-5	CPC-15	CPC-25		L	A
CPCD-30/A/AM	11	-	2	-	TC-16-100/AM	5-29/32	A
CPCD-60/A/AM	22	2	-	2	TC-16-100/AM	5-29/32	A
CPCD-90/A/AM	33	2	2	2	TC-16-160/AM	8-17/64	A
CPCD-120/A/AM	44	4	-	4	TC-16-250/AM	11-13/16	A
CPCD-150/A/AM	55	-	-	6	TC-16-250/AM	11-13/16	A
CPCD-180/A/AM	66	-	2	6	TC-16-250/AM	11-13/16	A
CPCD-210/A/AM	88	2	-	8	TC-16-340/AM	15-11/32	A
CPCD-240/A/AM	110	2	2	8	TC-16-340/AM	15-11/32	A
CPCD-270/A/AM	132	4	-	10	TCC-16-420/AM	18-1/2	A
CPCD-300/A/AM	154	-	-	12	TC-16-340/AM	15-11/32	A
CPCD-K/A/AM	K	-	-	-	-	-	-

NOTE: Heavier "K" counterweights can be provided upon request.
 Dimension "A" depends on the separation of the bundle conductor.