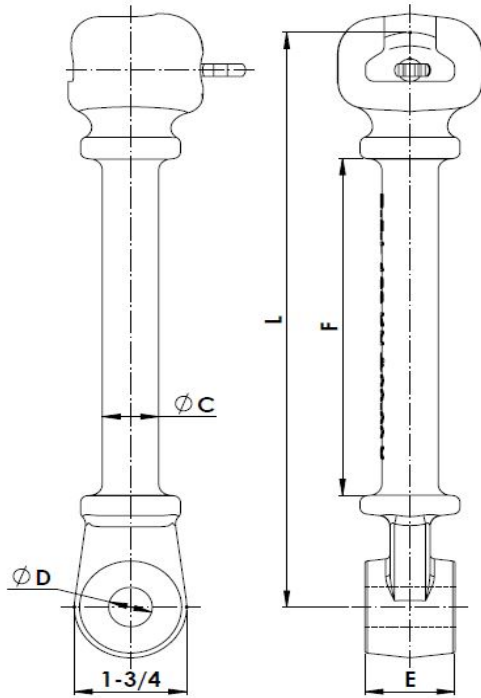




Industrias Arruti

6.1 HOT LINE SOCKET EYE



Material: Forged steel EN-10083 (Equivalent to ASTM A576).				Locking pin: Stainless steel.				
Steel parts finish: Hot dip galvanising ASTM A153.								
Reference	Standard	Dimensions (Inch)					Ultimate Strength (lb)	Weight (lb)
		C	D	E	F	L		
R-5-L (5/8-11/16)	ANSI 52-5	7/8	11/16	5/8	5-7/8	10.00	30,000	3.30
R-5-L (11/16-11/16)	ANSI 52-5	7/8	11/16	11/16	5-7/8	10.00	30,000	3.41
R-5-L (3/4-11/16)	ANSI 52-5	7/8	11/16	3/4	5-7/8	10.00	30,000	3.52
R-5-L (13/16-13/16)	ANSI 52-5	7/8	13/16	13/16	5-7/8	10.00	30,000	3.50
R-5-L (3/4-13/16)	ANSI 52-5	7/8	13/16	3/4	5-7/8	10.00	30,000	3.45

NOTE: Other dimension "E" and "D" can be manufactured upon request.