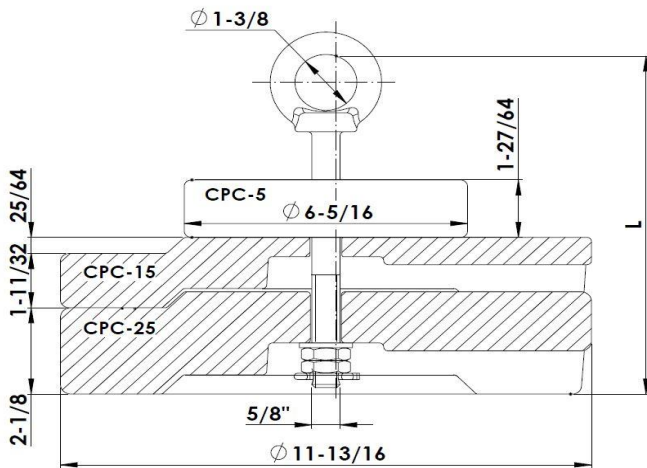




Industrias Arruti

**01 CYLINDRICAL COUNTERWEIGHTS**



**Material:** Body: Cast iron EN-1563 (similar to ASTM A48).

**Locking Pins:** Stainless Steel (AISI 304)

**Steel parts finish:** Hot dip galvanising ASTM A153.

**Nuts:** AST A563

Reference	Weight (lb)	Number of counterweights			Eye bolt	L (inch)
		CPC-5	CPC-15	CPC-25		
CPC-5/AM	11	1	-	-	TC-16-100/AM	5-29/32
CPC-10/AM	22	2	-	-	TC-16-100/AM	5-29/32
CPC-15/AM	33	-	1	-	TC-16-100/AM	5-29/32
CPC-20/AM	44	1	1	-	TC-16-100/AM	5-29/32
CPC-25/AM	55	-	-	1	TC-16-100/AM	5-29/32
CPC-30/AM	66	1	-	1	TC-16-100/AM	5-29/32
CPC-40/AM	88	-	1	1	TC-16-100/AM	5-29/32
CPC-50/AM	110	-	-	2	TC-16-160/AM	8-17/64
CPC-60/AM	132	2	-	2	TC-16-250/AM	11-13/16
CPC-70/AM	154	1	1	2	TC-16-250/AM	11-13/16
CPC-80/AM	176	1	-	3	TC-16-250/AM	11-13/16
CPC-90/AM	198	-	1	3	TC-16-250/AM	11-13/16
CPC-100/AM	220	-	-	4	TC-16-250/AM	11-13/16
CPC-120/AM	264	1	1	4	TC-16-340/AM	15-11/32
CPC-140/AM	308	-	1	5	TC-16-340/AM	15-11/32
CPC-160/AM	352	2	-	6	TCC-16-420/AM	18-1/2
CPC-180/AM	396	1	-	7	TCC-16-480/AM	20-7/8
CPC-200/AM	440	-	-	8	TCC-16-480/AM	20-7/8
CPC-230/AM	506	1	-	9	TCC-16-600/AM	25-19/32
CPC-260/AM	572	2	-	10	TCC-16-650/AM	27-9/16
CPC-290/AM	638	-	1	11	TCC-16-700/AM	29-17/32
CPC-K/AM	K	-	-	-	-	-