



ALUMINUM TEE CONNECTORS

REFERENCE
MXCP

Straight or tee connector cable to flatbar, conductor can enter straight or 90° to pad.

Cap is reversible in order to accommodate a wide range of conductor sizes.

Material: Casting - Aluminum Alloy

Hardware: Stainless or Galvanized Steel

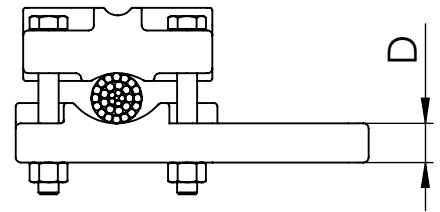
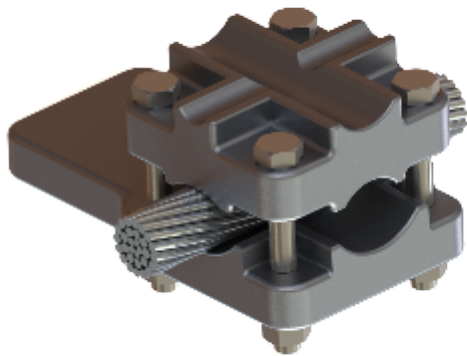
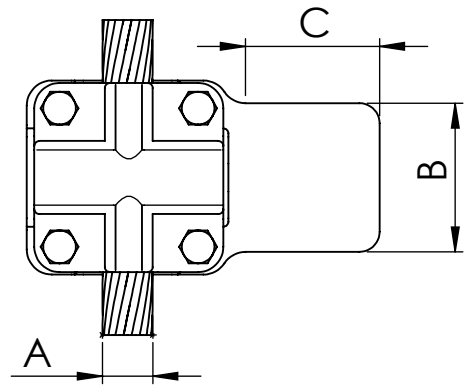
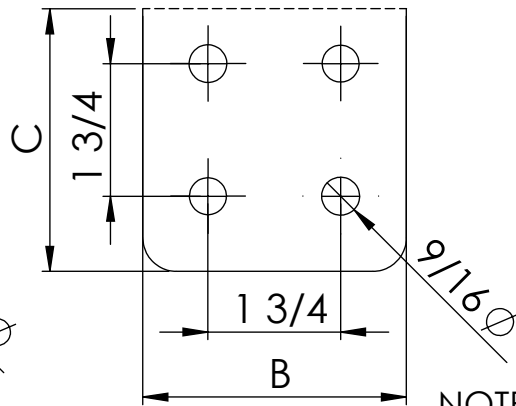
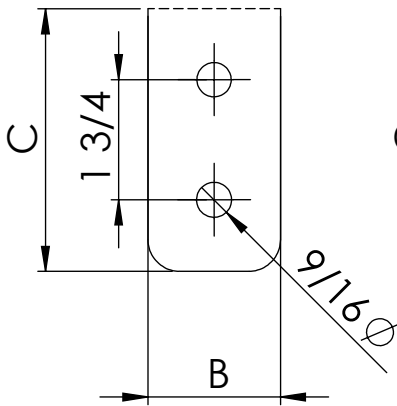


FIG. 1

FIG. 2



NOTE: *other flat dimensions available*

CATALOG NUMBER	FIG NO.	CONDUCTOR RANGE (A)		DIMENSIONS			Tightening torque (ft.lb)	
		Min.	Max.	B	C	D	A	B
MXCP-6302N		50	630	2	3	0.79	20	20
MXCP-6303N		50	630	3	3	0.79	20	20
MXCP-6304N		50	630	4	4	0.79	20	40