

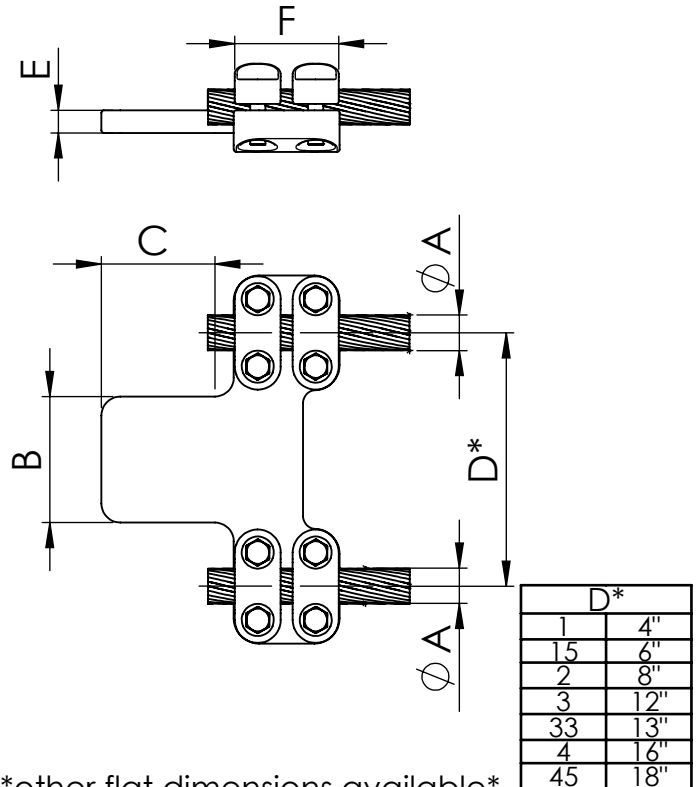
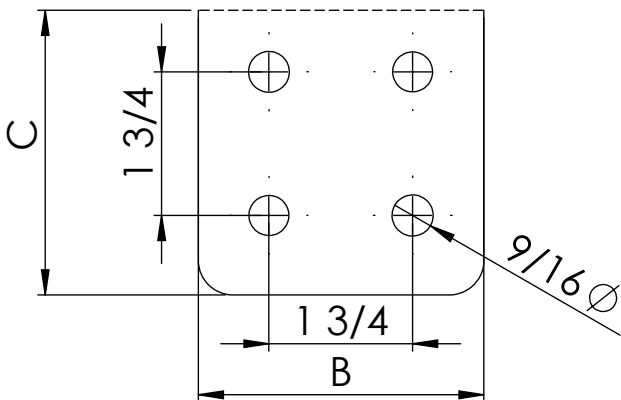
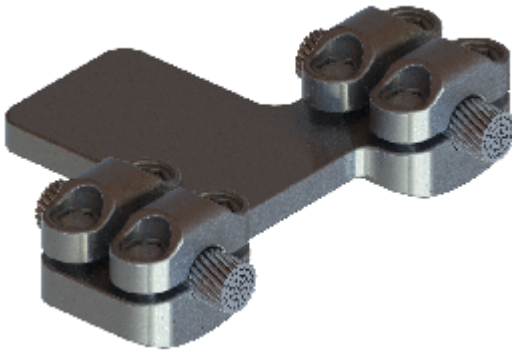


REFERENCE
MRDP

Straight connector for duplex cable to flatbar.

Material: Casting - Aluminum Alloy

Hardware: Stainless or Galvanized Steel



NOTE: *other flat dimensions available*

CATALOG NUMBER	CONDUCTOR RANGE (A)		DIMENSIONS					Tightening torque (ft.lb)
	Min.	Max.	B	C	D*	E	F	
MRDP.*-223N	0.79	0.91	3	3		0.59	3.35	20
MRDP.*-224N	0.79	0.91	4	4		0.59	3.35	20
MRDP.*-253N	0.94	1.02	3	3		0.59	3.35	20
MRDP.*-254N	0.94	1.02	4	4		0.59	3.35	20
MRDP.*-303N	1.06	1.18	3	3		0.59	3.35	20
MRDP.*-304N	1.06	1.18	4	4		0.59	3.35	20
MRDP.*-323N	1.22	1.26	3	3		0.59	3.54	40
MRDP.*-324N	1.22	1.26	4	4		0.59	3.54	40
MRDP.*-353N	1.30	1.38	3	3		0.59	3.54	40
MRDP.*-354N	1.30	1.38	4	4		0.59	3.54	40
MRDP.*-383N	1.42	1.54	3	3		0.59	3.54	40
MRDP.*-384N	1.42	1.54	4	4		0.59	3.54	40
MRDP.*-433N	1.57	1.69	3	3		0.59	3.54	40
MRDP.*-434N	1.57	1.69	4	4		0.59	3.54	40