

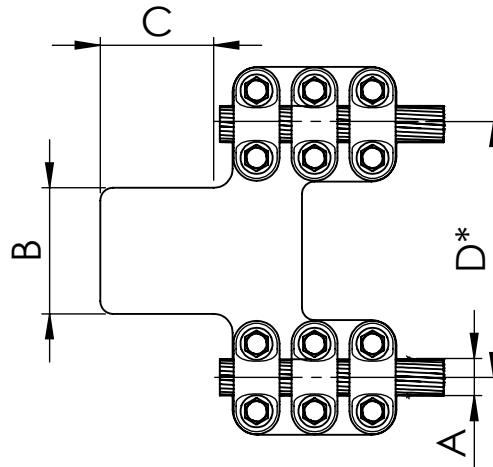
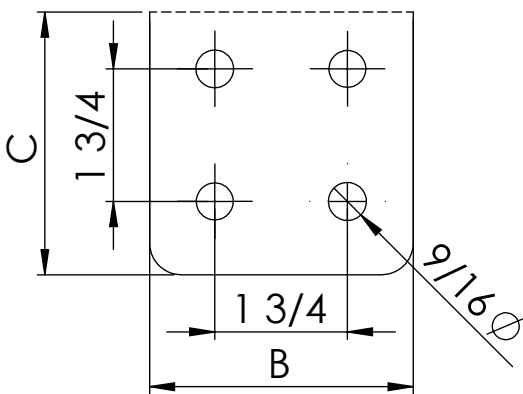
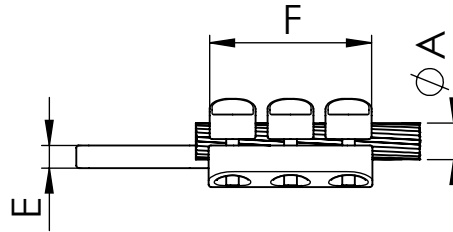
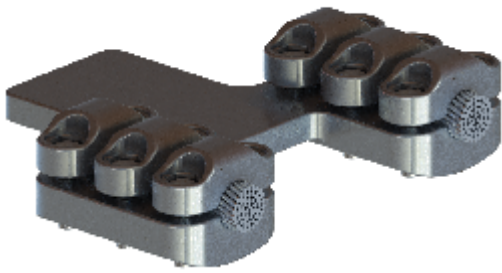


REFERENCE
MRD3P

Straight connector duplex cable to flabar.

Material: Casting - Aluminum Alloy

Hardware: Stainless or Galvanized Steel



D*	
1	4"
15	6"
2	8"
3	12"
33	3"
4	6"
45	8"

Note: *other flat dimensions & hole patterns available*

CATALOG NUMBER	CONDUCTOR RANGE (A)		DIMENSIONS					Tightening torque (ft.lb)
	Min.	Max.	B	C	D*	E	F	
MRD3P.*-303N	1.06	1.18	3	3		0.59	5.12	40
MRD3P.*-304N	1.06	1.18	4	4		0.59	5.12	40
MRD3P.*-323N	1.22	1.26	3	3		0.59	5.12	40
MRD3P.*-324N	1.22	1.26	4	4		0.59	5.12	40
MRD3P.*-353N	1.30	1.38	3	3		0.59	5.12	40
MRD3P.*-354N	1.30	1.38	4	4		0.59	5.12	40
MRD3P.*-383N	1.42	1.54	3	3		0.59	5.12	40
MRD3P.*-384N	1.42	1.54	4	4		0.59	5.12	40
MRD3P.*-433N	1.57	1.69	3	3		0.59	5.12	40
MRD3P.*-434N	1.57	1.69	4	4		0.59	5.12	40