

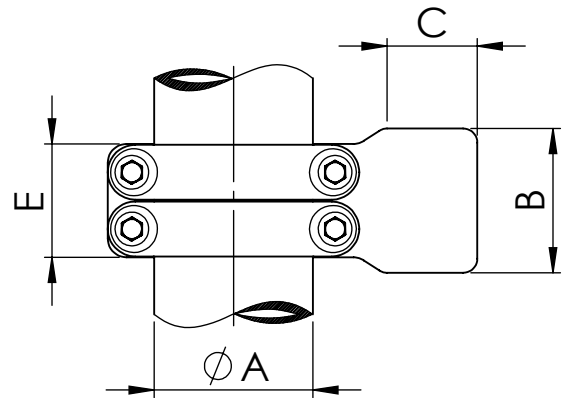
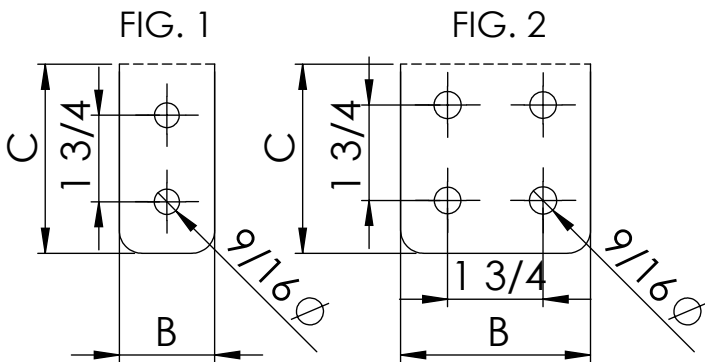
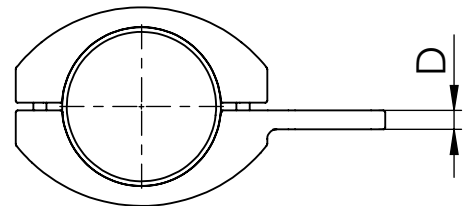
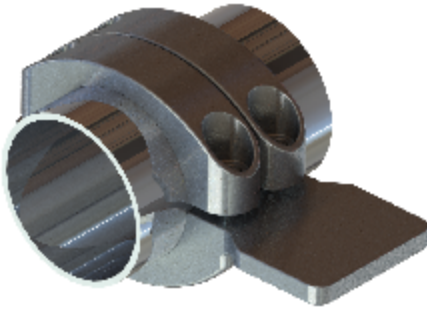


REFERENCE
MDBP

Tee connector for tube to flatbar.

Material: Casting - Aluminum Alloy

Hardware: Stainless or Galvanized Steel



NOTE: *other flat dimensions available*

CATALOG NUMBER	FIG NO.	CONDUCTOR SIZE	DIMENSIONS					Tightening torque (ft.lb)
			A	B	C	D	E	
MDBP-482N	1	1 1/2	2	3	0.79	3.94	40	
MDBP-483N	2	1 1/2	3	3	0.79	3.94	40	
MDBP-484N	2	1 1/2	4	4	0.79	3.94	40	
MDBP-602N	1	2	2	3	0.79	3.94	40	
MDBP-603N	2	2	3	3	0.79	3.94	40	
MDBP-604N	2	2	4	4	0.79	3.94	40	
MDBP-733N	2	2 1/2	3	3	0.79	3.94	40	
MDBP-734N	2	2 1/2	4	4	0.79	3.94	40	
MDBP-893N	2	3	3	3	0.79	3.94	40	
MDBP-894N	2	3	4	4	0.79	3.94	40	
MDBP-1013N	2	3 1/2	3	3	0.79	3.94	40	
MDBP-1014N	2	3 1/2	4	4	0.79	3.94	40	
MDBP-1144N	2	4	4	4	0.79	4.33	55	
MDBP-1414N	2	5	4	4	0.79	4.72	55	