



REFERENCE
RFBP

Expansion straight connector with guide copper tube to flatbar.

Material: Casting - Bronze

Laminations: Copper

Hardware: Stainless or Galvanized Steel

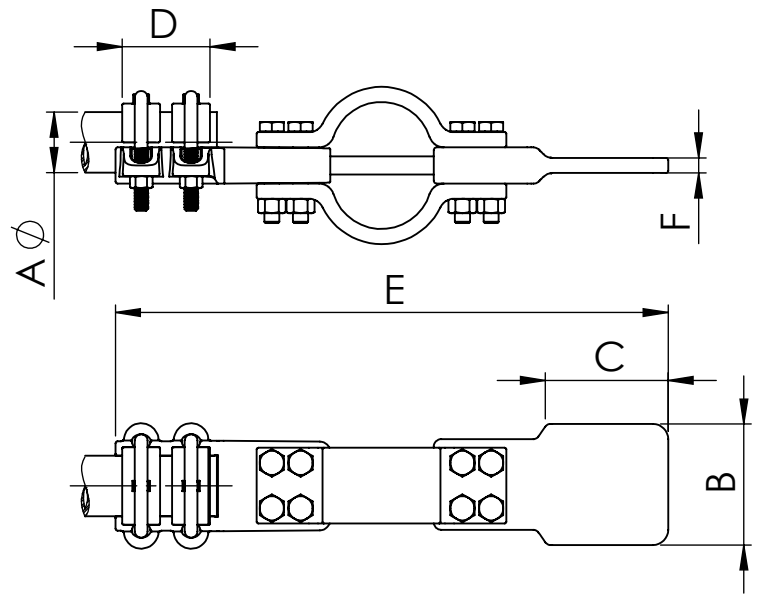
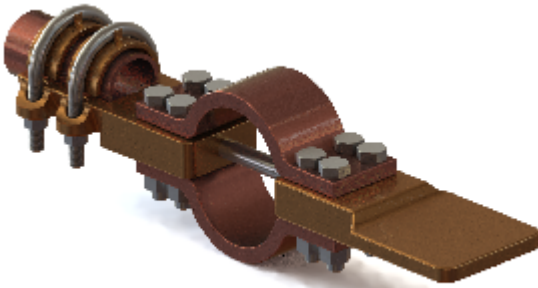
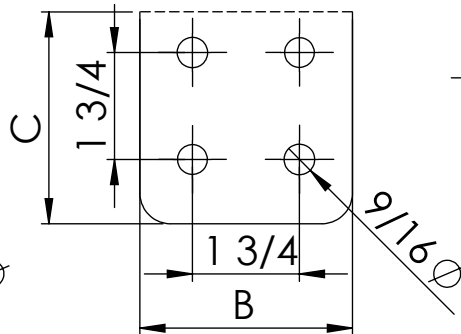
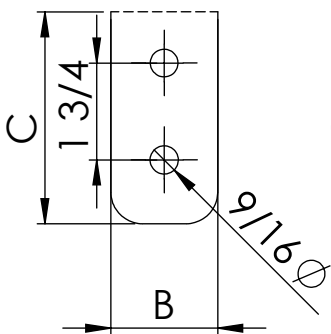


FIG. 1

FIG. 2



Note: *other flat dimensions & hole patterns available*

CATALOG NUMBER	FIG NO.	DIMENSIONS						Tightening torque (ft.lb)
		A	B	C	D	E	F	
RFBP-332N	1	1	2	3	2.44	13.98	0.39	20
RFBP-333N	2	1	3	3	2.44	13.98	0.39	20
RFBP-334N	2	1	4	4	2.44	14.76	0.39	20
RFBP-422N	1	1 1/4	2	3	2.64	14.37	0.39	20
RFBP-423N	2	1 1/4	3	3	2.64	14.37	0.39	20
RFBP-424N	2	1 1/4	4	4	2.64	15.16	0.39	20
RFBP-482N	1	1 1/2	2	3	2.95	14.76	0.39	20
RFBP-483N	2	1 1/2	3	3	2.95	14.76	0.39	20
RFBP-484N	2	1 1/2	4	4	2.95	15.55	0.39	20
RFBP-602N	1	2	2	3	3.15	14.96	0.47	20
RFBP-603N	2	2	3	3	3.15	14.17	0.39	20
RFBP-604N	2	2	4	4	3.15	15.75	0.39	20