

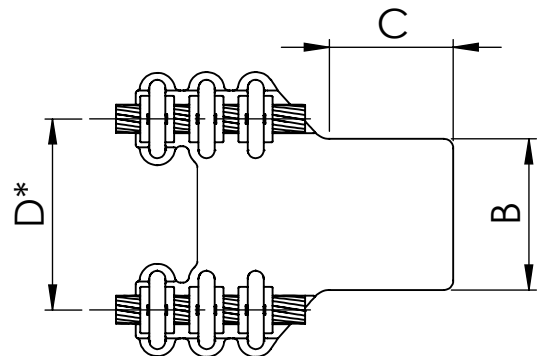
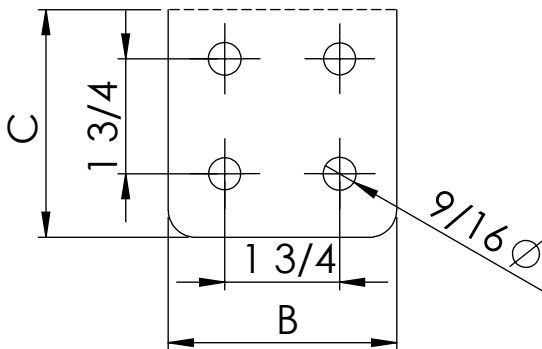
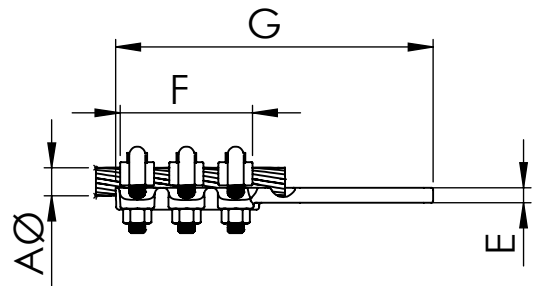
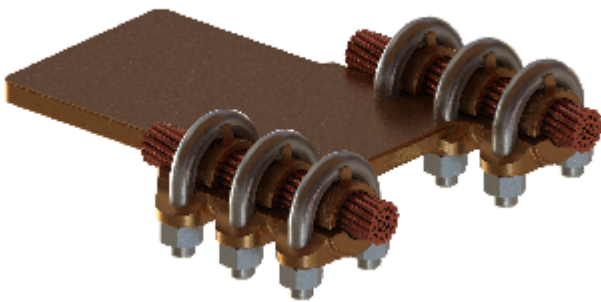


<b>REFERENCE</b>
RD3P

Duplex copper straight connector to copper flatbar.

**Material:** Casting - Bronze

**Hardware:** Stainless or Galvanized Steel



Note: \*other flat dimensions & hole patterns available\*

\*D: space between cables 1=4", 15=6"

CATALOG NUMBER	CONDUCTOR RANGE	DIMENSIONS						Tightening torque (ft.lb)	
		A	B	C	D	E	F		G
RD3P*-1503N	0.49-0.61	3	3			0.31	2.87	6.42	15
RD3P*-1504N	0.49-0.61	4	4			0.31	2.87	7.20	15
RD3P*-2503N	0.69-0.79	3	3			0.31	3.15	6.69	15
RD3P*-2504N	0.69-0.79	4	4			0.31	3.15	7.48	15
RD3P*-4003N	0.89-1.02	3	3			0.39	3.35	6.89	15
RD3P*-4004N	0.89-1.02	4	4			0.39	3.35	7.68	15
RD3P*-5003N	1.14	3	3			0.47	3.70	7.24	20
RD3P*-5004N	1.14	4	4			0.47	3.70	8.03	20