



Straight connector union copper cable to flatbar.

REFERENCE
RCP

Material: Casting - Bronze

Hardware: Stainless or Galvanized Steel

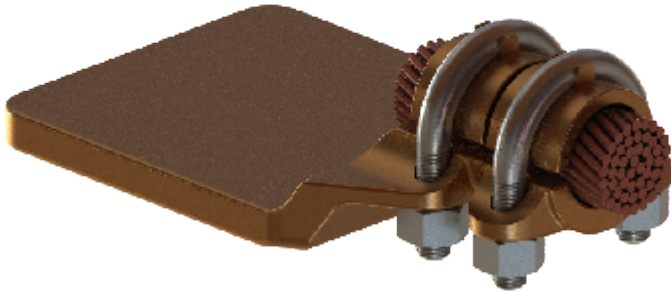


FIG. 1

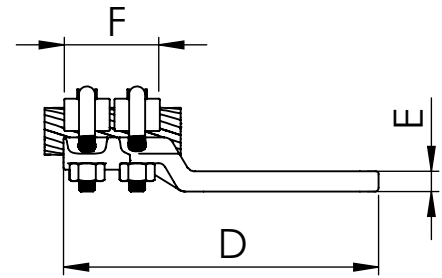
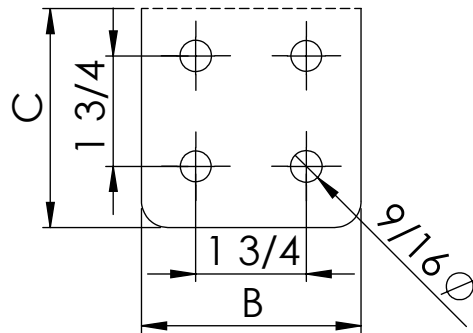
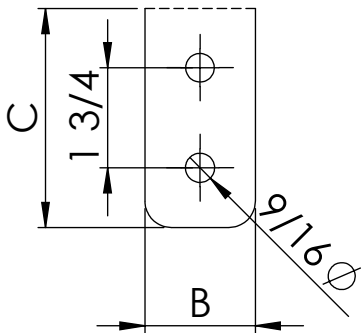
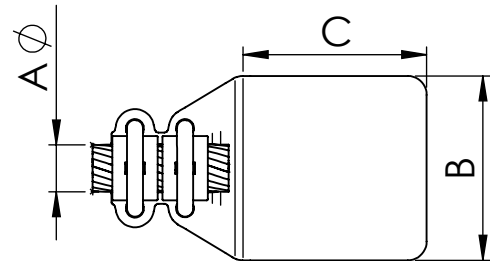


FIG. 2



Note: *other flat dimensions & hole patterns available*

CATALOG NUMBER	FIG NO.	CONDUCTOR RANGE	DIMENSIONS						Tightening torque (ft.lb)	
			A	B	C	D	E	F		INT.
RCP-702N	1	0.35-0.41	2	3	3	5.51	0.28	1.85	300	15
RCP-703N	2	0.35-0.41	3	3	3	5.51	0.28	1.85	300	15
RCP-704N	2	0.35-0.41	4	4	4	5.51	0.28	1.85	300	15
RCP-1502N	1	0.49-0.61	2	3	3	5.63	0.31	1.85	400	15
RCP-1503N	2	0.49-0.61	3	3	3	5.63	0.31	1.85	400	15
RCP-1504N	2	0.49-0.61	4	4	4	6.42	0.31	1.85	400	15
RCP-4002N	1	0.89-1.02	2	3	3	5.91	0.39	2.17	800	15
RCP-4003N	2	0.89-1.02	3	3	3	5.91	0.39	2.17	800	15
RCP-4004N	2	0.89-1.02	4	4	4	6.69	0.39	2.17	800	15
RCP-5002N	1	1.14	2	3	3	6.69	0.39	2.44	1250	20
RCP-5003N	2	1.14	3	3	3	6.69	0.39	2.44	1250	20
RCP-5004N	2	1.14	4	4	4	6.69	0.39	2.44	1250	20