



REFERENCE
RC3P

Straight connector union copper cable to flatbar.

**Material:** Casting - Bronze

**Hardware:** Stainless or Galvanized Steel

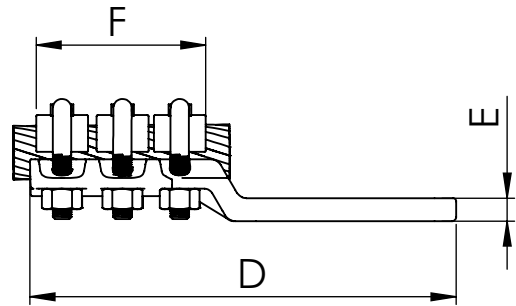
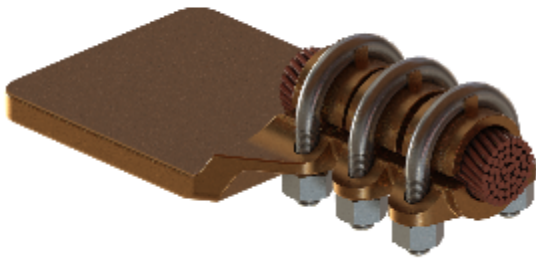
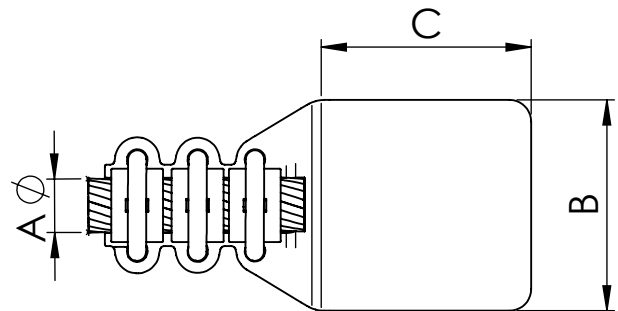
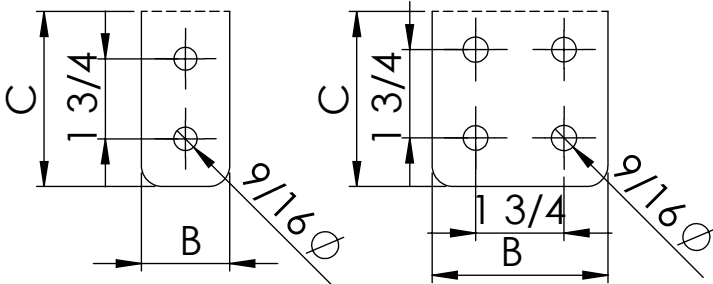


FIG. 1

FIG. 2



Note: \*other flat dimensions & hole patterns available\*

CATALOG NUMBER	FIG NO.	CONDUCTOR RANGE	DIMENSIONS						Tightening torque (ft.lb)	
			A	B	C	D	E	F		INT.
RC3P-1502N	1	0.49-0.61	2	3	3	6.18	0.31	2.87	400	15
RC3P-1503N	2	0.49-0.61	3	3	3	6.18	0.31	2.87	400	15
RC3P-1504N	2	0.49-0.61	4	4	4	6.97	0.31	2.87	400	15
RC3P-2502N	1	0.69-0.79	2	3	3	6.85	0.35	3.15	650	15
RC3P-2503N	2	0.69-0.79	3	3	3	6.85	0.35	3.15	350	15
RC3P-2504N	2	0.69-0.79	4	4	4	7.64	0.35	3.15	650	15
RC3P-4002N	1	0.89-1.02	2	3	3	7.09	0.39	3.35	800	15
RC3P-4003N	2	0.89-1.02	3	3	3	7.09	0.39	3.35	800	15
RC3P-4004N	2	0.89-1.02	4	4	4	7.87	0.39	3.35	800	15
RC3P-5002N	1	1.14	2	3	3	7.28	0.47	3.70	1250	20
RC3P-5003N	2	1.14	3	3	3	7.28	0.47	3.70	1250	20
RC3P-5004N	2	1.14	4	4	4	8.07	0.47	3.70	1250	20