



REFERENCE
RBP

Straight connector for copper tube to flatbar.

Material: Casting - Bronze

Hardware: Stainless or Galvanized Steel

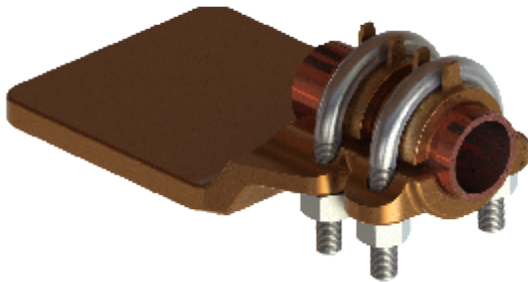


FIG. 1

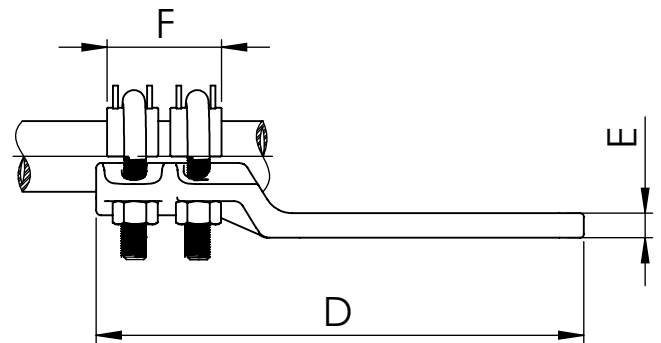
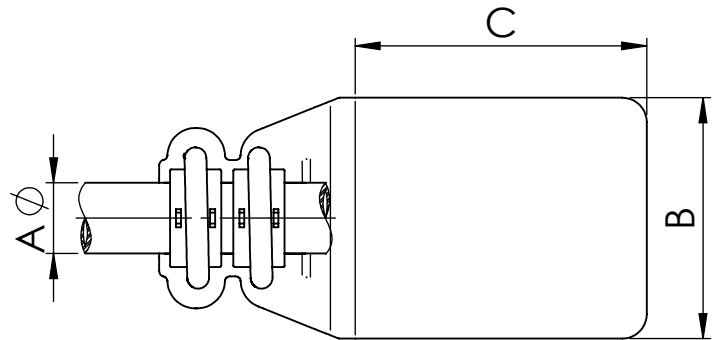
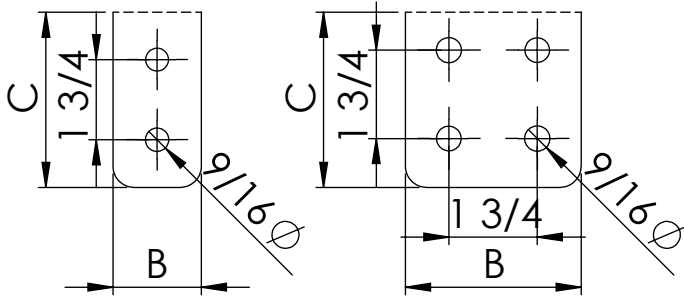


FIG. 2



Note: *other flat dimensions & hole patterns available*

CATALOG NUMBER	FIG NO.	CONDUCTOR SIZE	DIMENSIONS						Tightening torque (ft.lb)
			A	B	C	D	E	F	
RBP-332N	1	1	2	3	6.69	0.39	2.44	900	20
RBP-333N	2	1	3	3	6.69	0.39	2.44	900	20
RBP-334N	2	1	4	4	7.48	0.39	2.44	900	20
RBP-422N	1	1 1/4	2	3	6.50	0.47	2.64	1000	20
RBP-423N	2	1 1/4	3	3	6.50	0.47	2.64	1000	20
RBP-424N	2	1 1/4	4	4	7.28	0.47	2.64	1000	20
RBP-482N	1	1 1/2	2	3	6.89	0.47	2.95	1250	20
RBP-483N	2	1 1/2	3	3	6.89	0.47	2.95	1250	20
RBP-484N	2	1 1/2	4	4	7.68	0.47	2.95	1250	20
RBP-603N	2	2	3	3	7.48	0.47	3.15	1250	20
RBP-604N	2	2	4	4	8.27	0.51	3.15	1250	20