

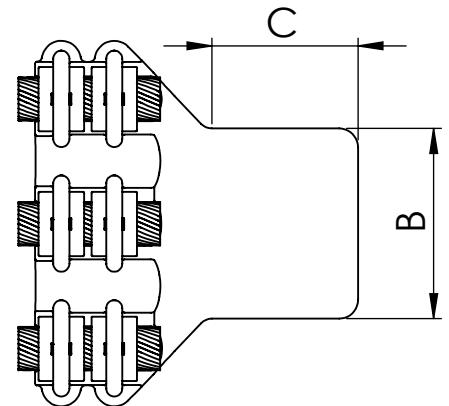
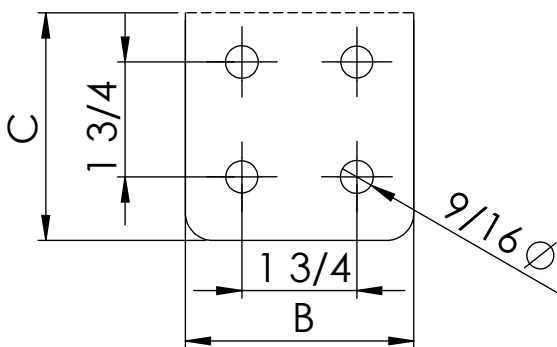
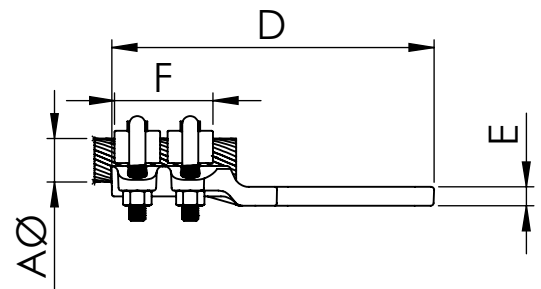
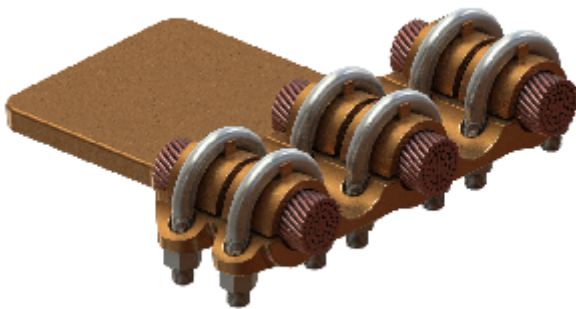


REFERENCE
R3CP

Straight connector for 3 copper cables to copper flatbar.

Material: Casting - Bronze

Hardware: Stainless or Galvanized Steel



*Note: space between cables 1=4", 15=6"

other flat dimensions & hole patterns available

CATALOG NUMBER	CONDUCTOR RANGE	DIMENSIONS					Tightening torque (ft.lb)
		A	B	C	D	E	
R3CP-1503N	0.49-0.61	3	3	6.30	0.31	1.85	15
R3CP-1504N	0.49-0.61	4	4	6.30	0.31	1.85	15
R3CP-2503N	0.69-0.79	3	3	6.57	0.35	2.05	15
R3CP-2504N	0.69-0.79	4	4	6.57	0.35	2.05	15
R3CP-4003N	0.89-1.02	3	3	6.69	0.39	2.17	15
R3CP-4004N	0.89-1.02	4	4	6.69	0.39	2.17	15
R3CP-5003N	1.14	3	3	7.09	0.39	2.44	15
R3CP-5004N	1.14	4	4	7.09	0.39	2.44	15