



REFERENCE
MRBP

Aluminum terminal for aluminum tube to flatbar.

Material: Casting - Aluminum Alloy

Hardware: Stainless or Galvanized Steel

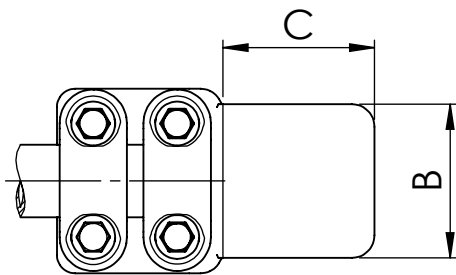
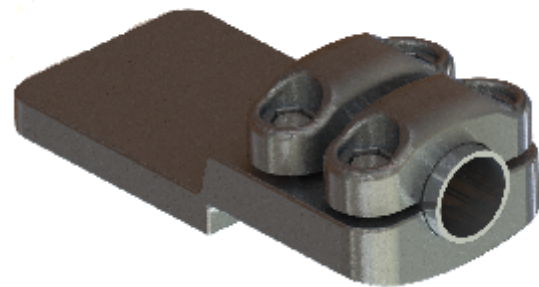
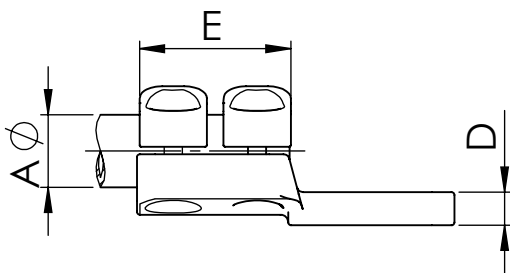
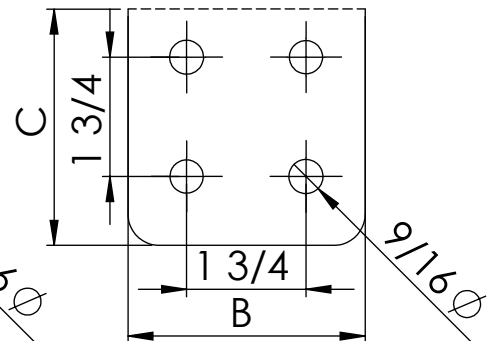
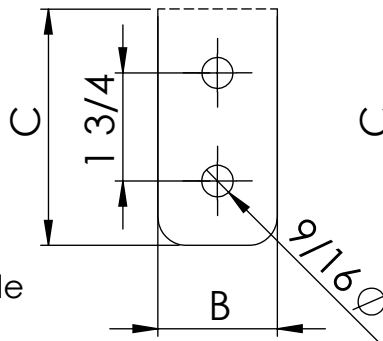


FIG. 1

FIG. 2



Note: *other flat dimensions & hole patterns available*

CATALOG NUMBER	FIG NO.	CONDUCTOR SIZE	DIMENSIONS				Tightening torque (ft.lb)
			A	B	C	D	
MRBP-332N	1	1	2	3	0.79	3.23	20
MRBP-333N	2	1	3	3	0.79	3.23	20
MRBP-334N	2	1	4	4	0.79	3.23	20
MRBP-422N	1	1 1/4	2	3	0.79	3.35	40
MRBP-423N	2	1 1/4	3	3	0.79	3.35	40
MRBP-424N	2	1 1/4	4	4	0.79	3.35	40
MRBP-483N	2	1 1/2	3	3	0.79	3.94	40
MRBP-484N	2	1 1/2	4	4	0.79	3.94	40
MRBP-603N	2	2	3	3	0.79	3.94	40
MRBP-604N	2	2	4	4	0.79	3.94	40
MRBP-733N	2	2 1/2	3	3	0.79	3.94	40
MRBP-734N	2	2 1/2	4	4	0.79	3.94	40
MRBP-893N	2	3	3	3	0.79	3.94	40
MRBP-894N	2	3	4	4	0.79	3.94	40
MRBP-1013N	2	3 1/2	3	3	0.79	3.94	40
MRBP-1014N	2	3 1/2	4	4	0.79	3.94	40