



REFERENCE
MLCP

90° terminal for cable to flatbar.

**Material:** Casting - Aluminum Alloy

**Hardware:** Stainless or Galvanized Steel

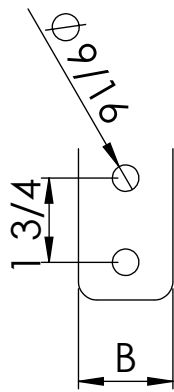
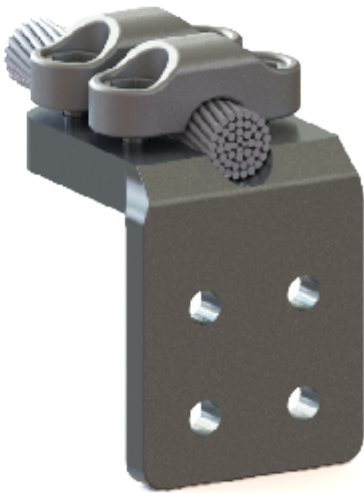


FIG. 1

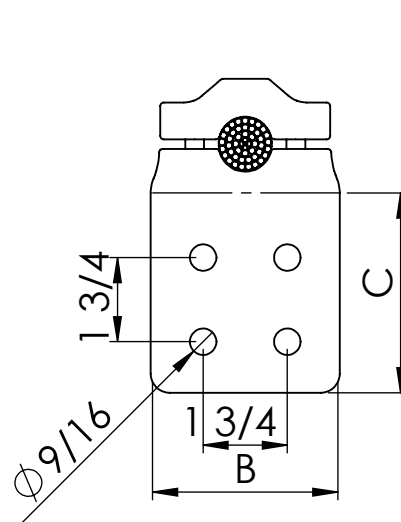
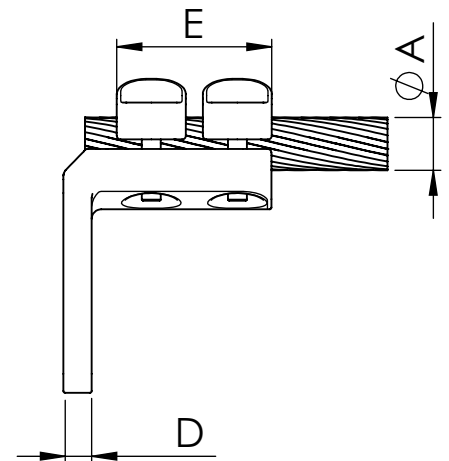


FIG. 2



\*NOTE: other flat dimensions & hole patterns available\*

\*Add "-/TAP" to include hardware shield\*

CATALOG NUMBER	FIG NO.	CONDUCTOR RANGE (A)		DIMENSIONS				Tightening torque (ft.lb)
		Min.	Max.	B	C	D	E	A
MLCP-152N	1	0.47	0.59	2	3	0.79	3.23	20
MLCP-153N	2	0.47	0.59	3	3	0.79	3.23	20
MLCP-154N	2	0.47	0.59	4	4	0.79	3.23	20
MLCP-182N	1	0.63	0.75	2	3	0.79	3.23	20
MLCP-183N	2	0.63	0.75	3	3	0.79	3.23	20
MLCP-184N	2	0.63	0.75	4	4	0.79	3.23	20
MLCP-222N	1	0.79	0.91	2	3	0.79	3.23	20
MLCP-223N	2	0.79	0.91	3	3	0.79	3.23	20
MLCP-224N	2	0.79	0.91	4	4	0.79	3.23	20
MLCP-252N	1	0.94	1.02	2	3	0.79	3.23	20
MLCP-253N	2	0.94	1.02	3	3	0.79	3.23	20
MLCP-254N	2	0.94	1.02	4	4	0.79	3.23	20
MLCP-302N	1	1.06	1.18	2	3	0.79	3.23	20
MLCP-303N	2	1.06	1.18	3	3	0.79	3.23	20
MLCP-304N	2	1.06	1.18	4	4	0.79	3.23	20



CATALOG NUMBER	FIG NO.	CONDUCTOR RANGE (A)		DIMENSIONS				Tightening torque (ft.lb)
		Min.	Max.	B	C	D	E	A
MLCP-322N	1	1.22	1.26	2	3	0.79	3.35	40
MLCP-323N	2	1.22	1.26	3	3	0.79	3.35	40
MLCP-324N	2	1.22	1.26	4	4	0.79	3.35	40
MLCP-352N	1	1.30	1.38	2	3	0.79	3.35	40
MLCP-353N	2	1.30	1.38	3	3	0.79	3.35	40
MLCP-354N	2	1.30	1.38	4	4	0.79	3.35	40
MLCP-382N	1	1.42	1.54	2	3	0.79	3.35	40
MLCP-383N	2	1.42	1.54	3	3	0.79	3.35	40
MLCP-384N	2	1.42	1.54	4	4	0.79	3.35	40
MLCP-432N	1	1.57	1.69	2	3	0.79	3.35	40
MLCP-433N	2	1.57	1.69	3	3	0.79	3.35	40
MLCP-434N	2	1.57	1.69	4	4	0.79	3.35	40
MLCP-553N	2	2.12	2.2	3	3	0.79	3.85	40
MLCP-554N	2	2.12	2.2	4	4	0.79	3.85	40