



REFERENCE
MLC3P

90° terminal for cable to flatbar.

**Material:** Casting - Aluminum Alloy

**Hardware:** Stainless or Galvanized Steel



FIG. 1

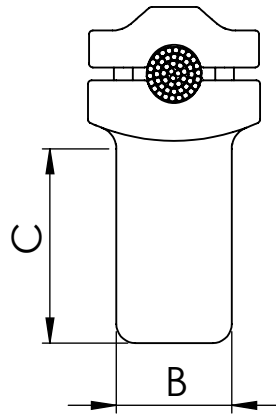
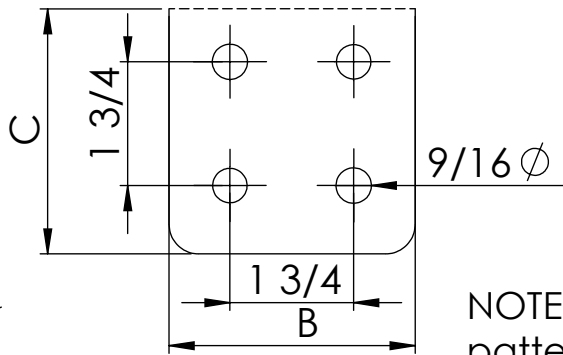
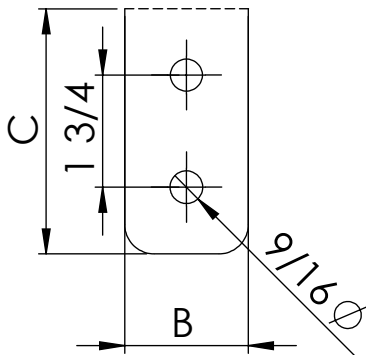
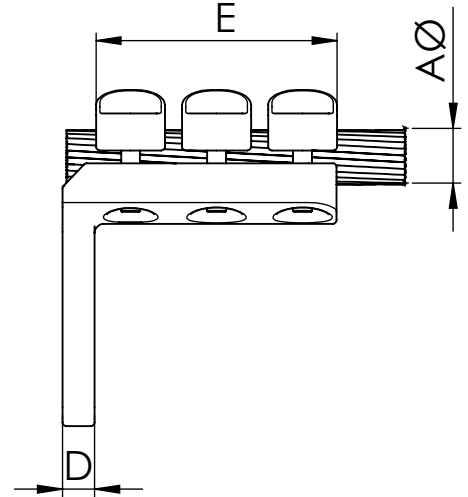


FIG. 2



NOTE: \*other flat dimensions & hole patterns available\*

CATALOG NUMBER	CONDUCTOR RANGE (A)		DIMENSIONS				Tightening torque (ft.lb)
	Min.	Max.	B	C	D	E	
MLCP3-323N	1.22	1.26	3	3	0.79	5.12	40
MLCP3-324N	1.22	1.26	4	4	0.79	5.12	40
MLCP3-353N	1.30	1.38	3	3	0.79	4.53	40
MLCP3-354N	1.30	1.38	4	4	0.79	4.53	40
MLCP3-383N	1.42	1.54	3	3	0.79	4.53	40
MLCP3-384N	1.42	1.54	4	4	0.79	4.53	40
MLCP3-433N	1.57	1.69	3	3	0.79	4.53	40
MLCP3-434N	1.57	1.69	4	4	0.79	4.53	40