



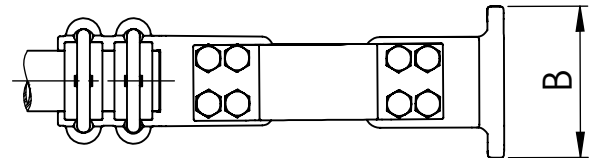
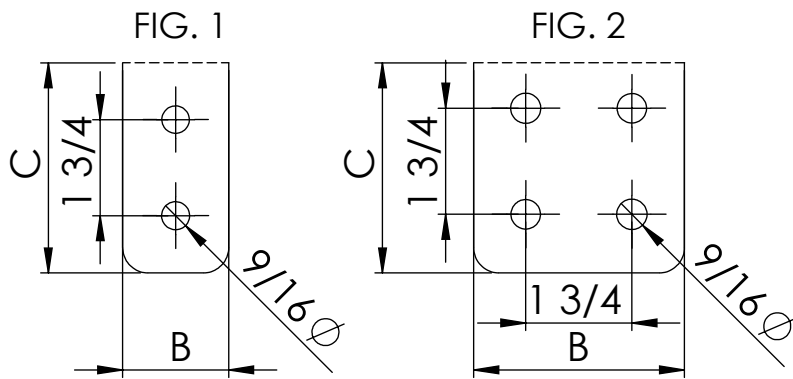
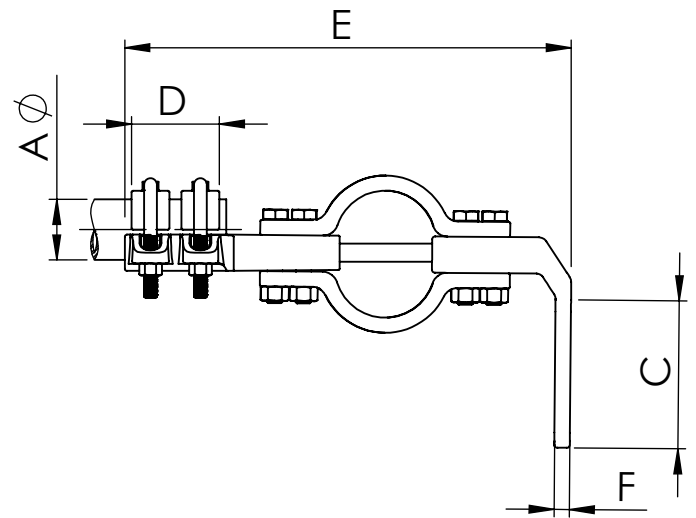
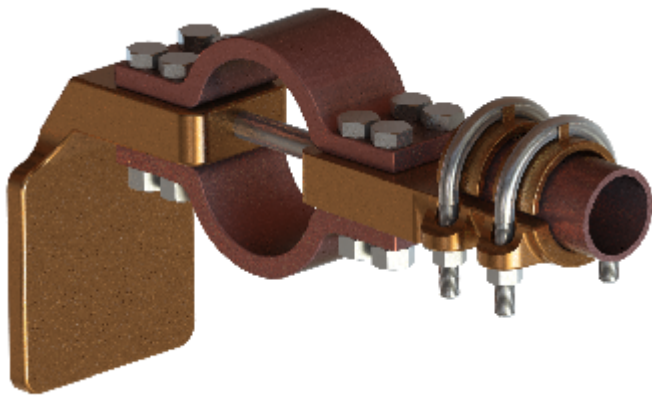
REFERENCE
LFBP

90° expansion connector with guide for union copper tube to flatbar.

**Material:** Casting - Bronze

**Laminations:** Copper

**Hardware:** Stainless or Galvanized Steel



Note: \*other flat dimensions & hole patterns available\*

CATALOG NUMBER	FIG NO.	DIMENSIONS						Tightening torque (ft.lb)
		A	B	C	D	E	F	
LFBP-332N	1	1	2	3	2.44	11.22	0.39	20
LFBP-333N	2	1	3	3	2.44	11.22	0.39	20
LFBP-334N	2	1	4	4	2.44	11.22	0.39	20
LFBP-422N	1	1 1/4	2	3	2.64	11.61	0.39	20
LFBP-423N	2	1 1/4	3	3	2.64	11.61	0.39	20
LFBP-424N	2	1 1/4	4	4	2.64	11.61	0.39	20
LFBP-482N	1	1 1/2	2	3	2.95	12.09	0.39	20
LFBP-483N	2	1 1/2	3	3	2.95	12.01	0.39	20
LFBP-484N	2	1 1/2	4	4	2.95	12.01	0.39	20
LFBP-602N	1	2	2	3	3.15	12.28	0.47	20
LFBP-603N	2	2	3	3	3.15	12.20	0.39	20
LFBP-604N	2	2	4	4	3.15	12.20	0.39	20