



REFERENCE
DBP

Tee connector for copper tube/stud to flatbar.

**Material:** Casting - Bronze

**Hardware:** Stainless or Galvanized Steel

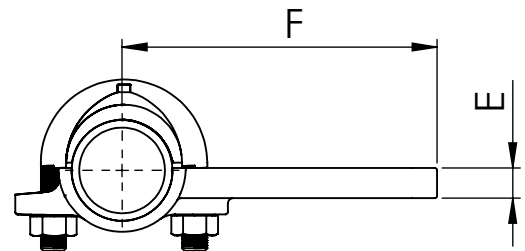
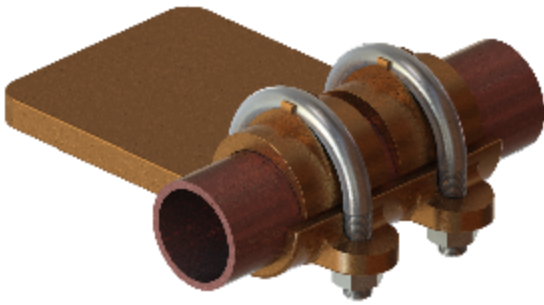
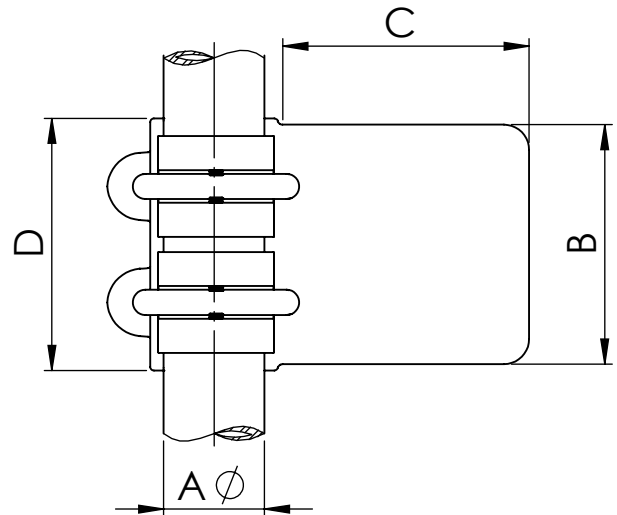
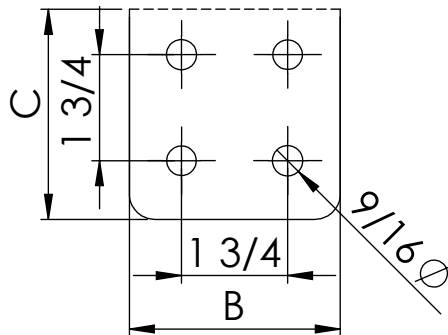
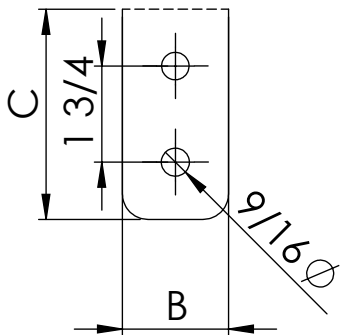


FIG. 1

FIG. 2



NOTE: \*other flat dimensions & hole patterns available\*

CATALOG NUMBER	FIG NO.	DIMENSIONS							Tightening torque (ft.lb)
		A	B	C	D	E	F	INT.	
DBP-332N	1	1	2	3	2.44	0.39	4.92	900	20
DBP-333N	2	1	3	3	2.44	0.39	4.92	900	20
DBP-334N	2	1	4	4	2.44	0.39	5.71	900	20
DBP-423N	2	1 1/4	3	3	2.64	0.47	5.08	1000	20
DBP-424N	2	1 1/4	4	4	2.64	0.47	5.87	1000	20
DBP-482N	1	1 1/2	2	3	2.95	0.47	5.35	1250	20
DBP-483N	2	1 1/2	3	3	2.95	0.47	5.35	1250	20
DBP-484N	2	1 1/2	4	4	2.95	0.47	6.14	1250	20
DBP-603N	2	2	3	3	3.15	0.51	5.55	1250	20
DBP-604N	2	2	4	4	3.15	0.51	6.34	1250	20