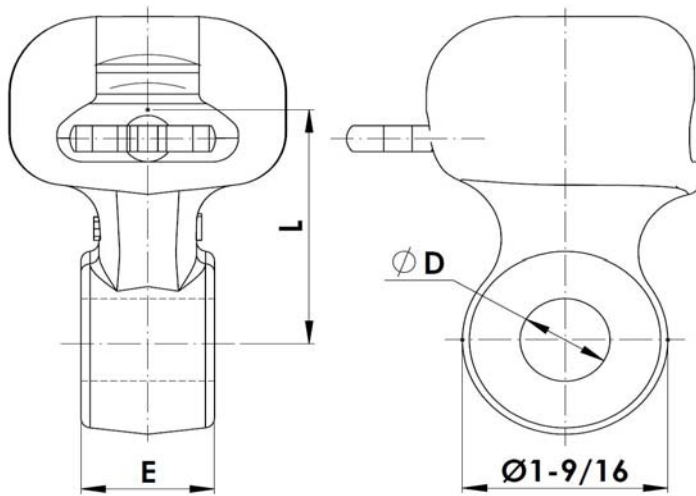




Industrias Arruti

1.1 SOCKET EYES



Material: Forged steel EN-10083 (equivalent to ASTM A576). Steel parts finish: Hot dip galvanising ASTM A153.		Locking pins: Stainless steel. (AISI 304)				
Reference	Standard	Dimensions (inch)			Ultimate Strength (lb)	Weight (lb)
		D	E	L		
R-5 (1/2-Ø11/16)	ANSI 52-5	11/16	1/2	2-1/16	30,000	1,12
R-5 (5/8-Ø11/16)	ANSI 52-5	11/16	5/8	2-1/16	30,000	1,16
R-5 (3/4-Ø11/16)	ANSI 52-5	11/16	3/4	2-1/16	30,000	1,3
R-5 (7/8-Ø11/16)	ANSI 52-5	11/16	7/8	2-1/16	30,000	1,34
R-5 (1-Ø11/16)	ANSI 52-5	11/16	1	2-1/16	30,000	1,38
R-5 (1-1/8-Ø11/16)	ANSI 52-5	11/16	1-1/8	2-1/16	30,000	1,48
R-5 (1-3/8-Ø11/16)	ANSI 52-5	11/16	1-3/8	2-1/16	30,000	1,52
R-5 (1-3/4-Ø11/16)	ANSI 52-5	11/16	1-3/4	2-1/16	30,000	1,65
R-5 (3/4-Ø13/16)	ANSI 52-5	13/16	3/4	2-1/16	30,000	1,13
R-5 (1-Ø13/16)	ANSI 52-5	13/16	1	2-1/16	30,000	1,34
R-5 (1-1/16-Ø13/16)	ANSI 52-5	13/16	1-1/16	2-1/16	30,000	1,38
R-5 (1-1/8-Ø13/16)	ANSI 52-5	13/16	1-1/8	2-1/16	30,000	1,38
R-5 (1-3/8-Ø13/16)	ANSI 52-5	13/16	1-3/8	2-1/16	30,000	1,48
R-5 (1-3/4-Ø13/16)	ANSI 52-5	13/16	1-3/4	2-1/16	30,000	1,61
R-8 (5/8-Ø13/16)	ANSI 52-11	13/16	5/8	3-11/32	50,000	2.46
R-8 (7/8-Ø13/16)	ANSI 52-11	13/16	7/8	3-11/32	50,000	2.57
R-8 (1-Ø13/16)	ANSI 52-11	13/16	1	3-11/32	50,000	2.68
R-8 (1-3/8-Ø13/16)	ANSI 52-11	13/16	1-3/8	3-11/32	50,000	2.90
R-8 (1-3/4-Ø13/16)	ANSI 52-11	13/16	1-3/4	3-11/32	50,000	3.00

NOTE: Other dimensions "E" and "D" can be manufactured upon request.